



HYDRO

## PIPES AND FITTINGS

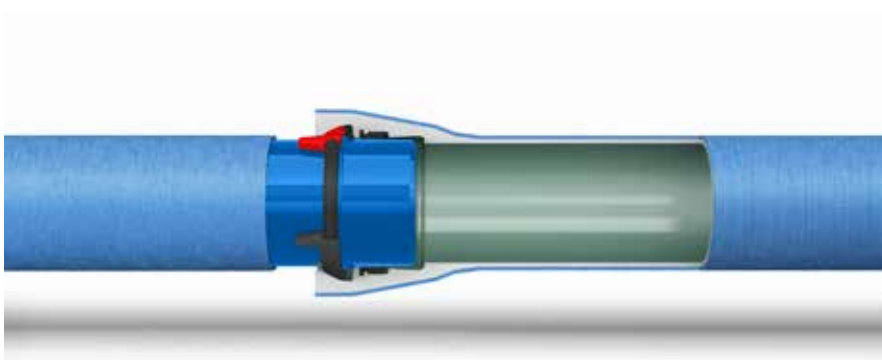
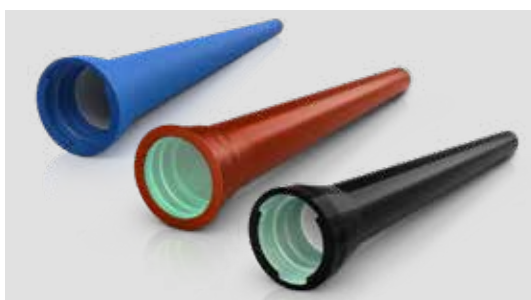
Full pricelist catalogue 2026 (excluding VAT)

Engineering support and customised products on request [www.vonroll-hydro.world/support](http://www.vonroll-hydro.world/support)

**NEW**

Valid from

**13.4.2026**





**HYDRO**

# ZEROWATERLOSS VISION BECOMES REALITY

Valued customers and business partners

Water is the foundation of life – this goes without saying. Despite this (or even because of this), we are not prepared to pay the right price for good, clean and safe water, or make investments to allow water to be safely transported using sustainable infrastructure, to retain its quality and to prevent theft and waste.

After decades of engagement with the issue of water, VONROLL HYDRO has developed the ZEROWATERLOSS mission statement. In doing so, we have seen how ZEROWATERLOSS has become a global challenge. Summer 2003 was the first time that even countries in Europe with plenty of water were shown how vulnerable the foundation of our life and our quality of life is. 2018 refreshed the (gladly suppressed) memory. In many places, sinking groundwater levels have been registered for years, and a significant portion of worldwide migration movements could be attributed to the increasing lack of water or conflicts connected to the control of water reserves. In addition to climate change, the key causes of water shortages are population growth, demands on the standard of living, overexploitation and ignorance. Where the Aral Sea still stood until recently, there are now dry boatyards in the desert. In many countries, over 50 % of the water generated in an energy-intensive manner in desalination plants gets lost on the way to the consumer.

The ZEROWATERLOSS mission statement ([www.zerowaterloss.world](http://www.zerowaterloss.world)) presents the counter-thesis: Water is a key part of the intergenerational contract. We must build infrastructure today with first-class, long-lasting components. Water quality and water

use must be monitored and safeguarded with innovative products and services (INFRAPORT as the foundations of smart cities and smart villages). The components required here for our infrastructure should ideally be manufactured regionally. This allows our values, which are reflected, for instance, in labour and environmental protection laws, to feed into our infrastructure. Thanks to short transport distances, CO<sub>2</sub> and exhaust gas pollution are minimised at the same time.

Together with you, our customers and business partners, we want to see ZEROWATERLOSS become a reality, with integrated and coordinated products and services worldwide. The new VONROLL HYDRO 2024 full catalogue forms a solid foundation for joint commitment. Our engineering teams are glad to have the chance to support you in planning and implementing large and small infrastructure projects.

ZEROWATERLOSS – so that water also remains a safe foundation of life for our descendants.

On behalf of the companies of the VONROLL HYDRO Group



Jürg Brand  
*President of the Board of Directors*



Marta Lozano  
*Director ZEROWATERLOSS*

## 1

### We recognise

discrimination-free access to clean water as a universal human right.

## 2

### We are committed to

not using more water than can sustainably flow back – Supplying our customers with high-quality water – Feeding used water back into circulation once purified.

## 3

### We favour

recycled and recyclable materials (ideally with no degradation), which are manufactured and transported with as little CO<sub>2</sub> and exhaust gas pollution as possible.

## 4

### We respect

the intergenerational contract by using high-quality and long-lasting products and services, and paying the right price for them.

## Contents

### 05 Drinking water pipes

HYDROTIGHT	05
BLS	08
BRS / Tyton-Sit / Tyton	14

---

### 16 Wastewater pipes

HYDROTIGHT	16
BLS	17
BRS / Tyton-Sit / Tyton	20

---

### 22 Fittings

BLS	22
BRS / Tyton-Sit / Tyton	40
Flanges	52
Screw-type sockets	72
Gland-type sockets	83
KS fittings	85
Wastewater	88

---

### 100 Connection technology

HYDROTIGHT	100
BLS	102
BRS / Tyton-Sit / Tyton	103
Seals	104

---

### 108 Accessories

Installation tool	108
Lubricant	111
Repair kit	113
Removal kit	115

---

# PIPES

## DRINKING WATER

### VONROLL ECOPUR HYDROTIGHT

Version: HYDROTIGHT push-in joint | incl. TYTON EPDM gasket  
 Standard length: 6 metres | other lengths on request  
 Standards: EN 545 | EN 15 655 | EN 15 189 | factory standard  
 Materials: Ductile cast iron | outer coating polyurethane (PUR) | inner lining polyurethane (PUR)  
 Certified: UBA-BWGL | DVGW \* | RAL GZ-699 | ZEROWATERLOSS



NEWPUR by VONROLL is the only polyurethane coating in the world that fulfils the requirements of the new EU Drinking Water Directive.

DN	Pressure class □ PFA bar	Weight / m kg	Part no.	Price / m €
80	C100	14,3	10069504	121.70
100	C100	17,3	10069509	121.70
125	C64	21,9	10069513	153.60
150	C64	27,1	10069517	186.30
200	C64	35,3	10069522	259.80
250	C50	46,8	10069525	365.80
300	C50	60,1	10069528	459.10
350	C40	72,9	10069536	584.80
400	C40	90,9	10069499	723.50

Pressure pipes for higher pressure ratings and other customised versions on request.  
 \* Country-specific approval

Installation accessories  
 Push / pull protection material for the pipe from page 101.  
 - Internal and external restraint

# PIPES

## DRINKING WATER

### VONROLL ECOCEM HYDROTIGHT

Version: HYDROTIGHT push-in joint | incl. TYTON seal EPDM  
 Standard length: 6 metres | other lengths on request  
 Standards: EN 545 | factory standard | EN 15 189  
 Materials: Ductile cast iron | outer coating polyurethane (PUR) | inner lining blast furnace cement  
 Certified: DVGW \* | RAL GZ-699 | ZEROWATERLOSS



NEWPUR by VONROLL is the only polyurethane coating in the world that fulfils the requirements of the new EU Drinking Water Directive.

DN	Pressure class □ PFA bar	Weight / m kg	Part no.	Price / m €
80	C100	16,1	10069415	117.10
100	C100	20,0	10069413	124.60
125	C64	26,0	10069411	145.10
150	C64	32,0	10069408	163.80
200	C64	41,3	10069406	209.10
250	C50	54,6	10069404	263.80
300	C50	70,7	10069402	325.70
350	C40	85,5	10069400	420.50
400	C40	107,0	10069417	476.00

Pressure pipes for higher pressure ratings and other customised versions on request.  
 \* Country-specific approval

Installation accessories  
 Push / pull protection material for the pipe from page 101.  
 - Internal and external restraint

# PIPES

## DRINKING WATER

### VONROLL DUCPUR HYDROTIGHT

Version: HYDROTIGHT push-in socket connection | incl. TYTON EPDM gasket  
 Standard length: 6 metres | other lengths on request  
 Standards: EN 545 | EN 15 655 | factory standard  
 Materials: Ductile cast iron | outer coating zinc-aluminium coating (400 g/m<sup>2</sup>)  
 with top coating | inner lining polyurethane (PUR)  
 Certified: UBA-BWGL | DVGW \* | RAL GZ-699 | ZEROWATERLOSS



NEWPUR by VONROLL is the only polyurethane coating in the world that fulfils the requirements of the new EU Drinking Water Directive.

DN	Pressure class □ PFA bar	Weight / m kg	Part no.	Price / m €
80	C100	13,7	10069535	111.90
100	C100	16,6	10069538	105.60
125	C64	21,1	10069539	121.90
150	C64	26,2	10069542	148.70
200	C64	34,1	10069545	197.50
250	C50	45,3	10069546	297.50
300	C50	58,4	10069543	348.60
350	C40	71,0	10069540	387.30
400	C40	88,7	10069532	588.20

Pressure pipes for higher pressure ratings and other customised versions on request.  
 \* Country-specific approval

Installation accessories  
 Push / pull protection material for the pipe from page 101.  
 - Internal and external restraint

# PIPES

## DRINKING WATER

### VONROLL CEMPUR BLS

Version: Form-fit BLS connection | incl. TYTON EPDM gasket | excl. shear protection  
 Standard length: 6 metres | other lengths on request  
 Standards: EN 545 | EN 15 542 | EN 15 655 | factory standard  
 Materials: Ductile cast iron | outer coating zinc coating (200 g/m<sup>2</sup>) with top coating cement mortar | Inner lining polyurethane (PUR)  
 Certified: UBA-BWGL | DVGW \* | RAL GZ-699 | ZEROWATERLOSS



NEWPUR by VONROLL is the only polyurethane coating in the world that fulfils the requirements of the new EU Drinking Water Directive.

DN	Pressure level bar	Wall-thickness class	Weight/m kg	Part no.	Price/m €
80	100	K10	17,5	10069834	162.20
100	75	K10	21,3	10069835	170.30
125	63	K10	26,7	10069836	191.40
150	63	K9	32,6	10069837	216.20
200	42	K9	42,5	10069838	256.20
250	40	K9	55,9	10069839	321.30
300	40	K9	70,7	10069840	394.90
400	30	K9	101,9	10069833	570.20
500	30	K9	136,9	10069842	856.00
600	32	K9	178,0	10069843	1'116.70
700	25	K9	225,1	10069844	1'502.50

Pressure pipes for higher pressure levels and other customer-specific versions available on request.  
 \*Country-specific authorisation.

#### Installation accessories

Push / pull protection material for the pipe from page 101

- Cast iron locking bar
- Plastic locking bar
- Clamping rings
- Rubber sleeves
- Shrink-on sleeves

# PIPES

## DRINKING WATER

### DUKTUS CMC BLS

Version: Form-fit BLS connection | incl. TYTON EPDM gasket | excl. shear protection  
 Standard length: 6 metres | other lengths on request  
 Standards: EN 545 | EN 15 542 | factory standard  
 Materials: Ductile cast iron | outer coating zinc coating (200 g/m<sup>2</sup>) with top coating cement mortar | inner lining blast furnace cement  
 Certified: DVGW \* | RAL GZ-699 | ZEROWATERLOSS



DN	Pressure level bar	Wall-thickness class	Weight/m kg	Part no.	Price/m €
80	100	K10	21,2	10007966	98.70
100	75	K10	25,4	10007570	99.00
125	63	K10	32,4	10007973	142.40
150	63	K10	38,5	10007569	144.50
200	42	K9	50,3	10007963	176.60
250	40	K9	66,0	10007964	216.20
300	40	K9	83,5	10007967	305.40
400	30	K9	120,3	10007970	438.00
500	30	K9	158,5	10007977	609.50
600	32	K9	206,0	10007929	812.20
700	25	K9	261,2	10007953	1'184.80
800	16	K9	322,8	10007957	1'366.10
900	16	K9	386,0	10008021	1'639.20
1000	10	K9	451,7	10008008	1'952.90

Pressure pipes for higher pressure levels and other customer-specific versions available on request.  
 \*Country-specific authorisation

#### Installation accessories

Push / pull protection material for the pipe from page 101.

- Cast iron locking bar
- Plastic locking bar
- Clamping rings
- Rubber sleeves
- Shrink-on sleeves

# PIPES

## DRINKING WATER

### DUKTUS ZIPOX+ BLS

Version: Form-fit BLS connection | incl. TYTON EPDM seal | excl. shear protection  
 Standard length: 6 metres | other lengths on request  
 Standards: EN 545 | factory standard  
 Materials: Ductile cast iron | outer coating zinc-aluminium coating (400 g/m<sup>2</sup>) with top coating epoxy paint | inner lining blast furnace cement  
 Certified: DVGW \* | RAL GZ-699 | ZEROWATERLOSS



DN	Pressure level bar	Wall-thickness class	Weight/m kg	Part no.	Price / m €
80	100	K10	16,1	10008010	87.60
100	75	K10	20,1	10008011	89.80
125	63	K10	26,1	10008012	134.10
150	63	K10	32,0	10008014	136.70
200	42	K9	41,4	10008015	161.30
250	40	K9	55,0	10008017	206.20
300	40	K9	70,8	10008018	283.40
400	30	K9	104,2	10008019	417.10
500	30	K9	140,0	10008076	577.30
600	32	K9	186,4	10008077	809.80
700	25	K9	235,0	10008078	1'103.40
800	16	K9	294,7	10008079	1'364.30
900	16	K9	355,2	10008080	1'582.50
1000	10	K9	420,7	10008081	1'915.50

Pressure pipes for higher pressure levels and other customer-specific versions available on request.  
 \*Country-specific authorisation

#### Installation accessories

Push / pull protection material for the pipe from page 101.

- Cast iron locking bar
- Plastic locking bar
- Clamping rings
- Rubber sleeves
- Shrink-on sleeves

# PIPES

## DRINKING WATER

### VONROLL ECOPUR BLS

Version: Form-fit BLS connection | incl. TYTON EPDM seal | excl. shear protection  
 Standard length: 6 metres | other lengths on request  
 Standards: EN 545 | EN 15 655 | EN 15 189 | factory standard  
 Materials: Ductile cast iron | outer coating polyurethane (PUR) | inner lining polyurethane (PUR)  
 Certified: UBA-BWGL | DVGW \* | RAL GZ-699 | ZEROWATERLOSS



NEWPUR by VONROLL is the only polyurethane coating in the world that fulfils the requirements of the new EU Drinking Water Directive.

DN	Pressure level bar	Wall-thick- ness class	Weight/m kg	Part no.	Price/m €
80	100	K10	14,9	10069455	137.10
100	75	K10	18,0	10069472	138.20
125	63	K10	23,0	10069476	171.20
150	63	K10	28,2	10069481	209.90
200	42	K9	36,7	10069484	283.70
250	40	K9	48,9	10069489	405.90
300	40	K9	62,2	10069494	510.00
400	30	K9	90,9	10069541	815.60
500	30	K9	123,4	10069544	957.00
600	32	K9	161,7	10069547	1'231.10
700	25	K9	206,2	10069550	1'647.40

Pressure pipes for higher pressure levels and other customer-specific versions available on request.  
 \*Country-specific authorisation

#### Installation accessories

Push / pull protection material for the pipe from page 101.

- Cast iron locking bar
- Plastic locking bar
- Clamping rings
- Rubber sleeves
- Shrink-on sleeves

# PIPES

## DRINKING WATER

### VONROLL ECOCEM BLS

Version: Form-fit BLS connection | incl. TYTON EPDM seal | excl. shear protection  
 Standard length: 6 metres | other lengths on request  
 Standards: EN 545 | factory standard | EN 15 189  
 Materials: Ductile cast iron | outer coating polyurethane (PUR) | inner lining blast furnace cement | EPDM seal  
 Certified: DVGW \* | RAL GZ-699 | ZEROWATERLOSS



DN	Pressure level bar	Wall-thick- ness class	Weight/m kg	Part no.	Price / m €
80	100	K10	16,8	10069853	133.70
100	75	K10	20,8	10069854	135.10
125	63	K10	27,0	10069855	168.00
150	63	K10	33,1	10069856	206.90
200	42	K9	42,8	10069857	287.50
250	40	K9	56,8	10069858	402.40
300	40	K9	72,9	10069859	516.80
400	30	K9	107,0	10069860	812.40
500	30	K9	143,3	10069861	953.70
600	32	K9	190,4	10069862	1'227.60
700	25	K9	239,7	10069863	1'643.80

Pressure pipes for higher pressure levels and other customer-specific versions available on request.  
 \*Country-specific authorisation

#### Installation accessories

Push / pull protection material for the pipe from page 101.

- Cast iron locking bar
- Plastic locking bar
- Clamping rings
- Rubber sleeves
- Shrink-on sleeves

# PIPES

## DRINKING WATER

### VONROLL DUCPUR BLS

Version: Form-fit BLS connection | incl. TYTON EPDM gasket | excl. shear protection  
 Standard length: 6 metres | other lengths on request  
 Standards: EN 545 | factory standard | EN 15 655  
 Materials: Ductile cast iron | outer coating zinc-aluminium coating (400 g/m<sup>2</sup>)  
 with top coating | inner lining polyurethane (PUR)  
 Certified: UBA-BWGL | DVGW \* | RAL GZ-699 | ZEROWATERLOSS



NEWPUR by VONROLL is the only polyurethane coating in the world that fulfils the requirements of the new EU Drinking Water Directive.

DN	Pressure level bar	Wall-thickness class	Weight / m kg	Partno.	Price / m €
80	100	K10	14,4	10069526	119.20
100	75	K10	17,4	10069524	120.10
125	63	K10	22,2	10069520	148.40
150	63	K10	27,3	10069521	181.90
200	42	K9	35,5	10069523	248.20
250	40	K9	47,5	10069527	343.40
300	40	K9	60,5	10069530	436.50
400	30	K9	88,7	10069537	539.20
500	30	K9	120,7	10069534	802.80
600	32	K9	158,6	10069531	1'092.00
700	25	K9	202,8	10069529	1'479.00

Pressure pipes for higher pressure levels and other customer-specific versions available on request.  
 \*Country-specific authorisation

#### Installation accessories

Push / pull protection material for the pipe from page 101.

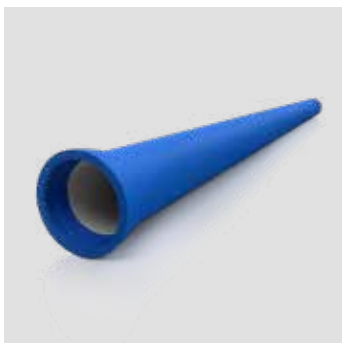
- Cast iron locking bar
- Plastic locking bar
- Clamping rings
- Rubber sleeves
- Shrink-on sleeves

# PIPES

## DRINKING WATER

### DUKTUS CMC TYTON

Version: TYTON push-in socket joint | incl. TYTON EPDM gasket | non-restrained  
 Standard length: 6 metres | other lengths on request  
 Standards: EN 545 | EN 15 542 | factory standard  
 Materials: Ductile cast iron | outer coating zinc coating (200 g/m<sup>2</sup>) with top coating cement mortar | inner lining blast furnace cement  
 Certified: DVGW \* | RAL GZ-699 | ZEROWATERLOSS



DN	Pressure class □ PFA bar	Weight / m kg	Part no.	Price / m €
80	C100	20,5	10008117	85.20
100	C100	24,9	10008118	84.30
125	C64	31,4	10008119	110.40
150	C64	35,8	10007969	108.80
200	C64	49,8	10008111	143.70
250	C50	63,7	10008112	189.60
300	C50	81,0	10008113	247.90
350	C40	97,7	10008114	334.20
400	C40	116,4	10008115	339.60
500	C40	158,1	10008116	580.20
600	C30	183,3	10007914	656.70
600	C40	213,8	10035873	721.80
700	C30	253,6	10036595	1'090.20
800	C30	313,0	10023148	1'296.20
900	C30	371,5	10036596	1'520.20
1000	C30	432,6	10036597	1'777.50

Pressure pipes for higher pressure levels and other customer-specific versions available on request.  
 \* Country-specific authorisation

# PIPES

## DRINKING WATER

### DUKTUS ZIPOX+ TYTON

Version: TYTON push-in joint | incl. TYTON EPDM gasket | not longitudinally force-fit  
 Standard length: 6 metres | other lengths on request  
 Standards: EN 545 | factory standard  
 Materials: Ductile cast iron | outer coating zinc-aluminium coating (400 g/m<sup>2</sup>) with top coating epoxy paint | inner lining blast furnace cement  
 Certified: DVGW \* | RAL GZ-699 | ZEROWATERLOSS



DN	Pressure class □ PFA bar	Weight/m kg	Part no.	Price/m €
80	C50	13,2	10007845	58.10
80	C100	15,5	10007778	68.60
100	C50	16,4	10007846	55.80
100	C100	19,5	10007790	67.10
125	C50	20,9	10007847	82.70
125	C64	25,1	10007777	94.80
150	C50	25,7	10007764	80.70
150	C64	29,2	10007788	93.20
200	C50	34,8	10007765	114.50
200	C64	40,9	10007776	128.30
250	C40	45,5	10007758	144.90
250	C50	52,7	10007774	173.20
300	C40	58,6	10007759	183.80
300	C50	68,3	10007775	206.50
350	C30	69,4	10008092	280.10
350	C40	82,7	10007767	308.30
400	C30	85,7	10008094	305.60
400	C40	100,2	10007768	319.70
500	C30	117,9	10008096	452.60
500	C40	139,6	10007773	509.30
600	C30	163,7	10008098	588.80
600	C40	193,7	10007819	636.80
700	C25	195,5	10008100	786.80
700	C30	211,5	10007761	855.10
800	C25	246,5	10008102	934.50
800	C30	272,0	10007762	1'019.00
900	C30	332,4	10007763	1'206.50
1000	C30	399,3	10007766	1'475.70

Pressure pipes for higher pressure levels and other customer-specific versions available on request.  
 \* Country-specific authorisation

# PIPES

## WASTE WATER

### VONROLL DUCPUR HYDROTIGHT

Version: HYDROTIGHT push-in socket connection | incl. TYTON seal NBR  
 Standard length: 6 metres | other lengths on request  
 Standards: EN 598 | factory standard | EN 15 655  
 Material: Ductile cast iron | outer coating zinc-aluminium coating (400 g/m<sup>2</sup>) with top coating | Inner lining polyurethane (PUR)  
 Certified: RAL GZ-699 | ZEROWATERLOSS



NEWPUR by VONROLL is the only polyurethane coating in the world that fulfils the requirements of the new EU Drinking Water Directive.

DN	Pressure class □ PFA bar	Weight/m kg	Part no.	Price/m €
100	100	16,6	10069465	132.30
125	64	21,1	10069463	160.20
150	64	26,2	10069460	178.10
200	64	34,1	10069458	211.00
250	50	45,3	10069453	259.80
300	50	58,4	10069451	348.10
350	40	71,0	10069448	398.70
400	40	88,7	10069447	444.20

Pressure pipes for higher pressure levels and other customised versions on request.

#### Installation accessories

Push / pull protection material for the pipe from page 101.  
 – Internal and external train protection

# PIPES

## WASTE WATER

### DUKTUS DUCPUR BLS

Design: Form-fit BLS connection | incl. TYTON seal NBR | excl. shear protection  
 Standard length: 6 metres | other lengths on request  
 Standards: EN 598 | factory standard | EN 15 655  
 Materials: Ductile cast iron | outer coating zinc-aluminium coating (400 g/m<sup>2</sup>) with top coating | Inner lining polyurethane (PUR)  
 Certified: RAL GZ-699 | ZEROWATERLOSS



NEWPUR by VONROLL is the only polyurethane coating in the world that fulfils the requirements of the new EU Drinking Water Directive.

DN	Pressure level bar	Wall-thickness class	Weight/m kg	Partno.	Price/m €
500	30	K9	120,7	10069444	814.10
600	32	K9	158,6	10069442	843.30
700	25	K9	202,8	10069441	1'199.10

Pressure pipes for higher pressure levels and other customised versions on request.

#### Installation accessories

Push / pull protection material for the pipe from page 101.

- Cast iron locking bar
- Plastic locking bar
- Clamping rings
- Rubber sleeves
- Shrink-on sleeves

# PIPES

## WASTE WATER

### DUKTUS CMC BLS

Version: Form-fit BLS connection | incl. TYTON seal NBR | excl. shear protection  
 Standard length: 6 metres | other lengths on request  
 Standards: EN 598 | EN 15 542 | factory standard  
 Material: Ductile cast iron | outer coating zinc coating (200 g/m<sup>2</sup>) with top coating cement mortar | inner lining alumina cement  
 Certified: RAL GZ-699 | ZEROWATERLOSS



DN	Pressure level bar	Wall-thickness class	Weight / m kg	Partno.	Price / m €
80	100	K10	21,2	10007971	106.20
100	75	K10	25,4	10007999	102.30
125	63	K10	32,4	10008063	147.70
150	63	K10	38,5	10007962	153.60
200	42	K9	50,3	10007981	184.70
250	40	K9	66,0	10007980	230.60
300	40	K9	83,5	10007979	332.50
400	30	K9	120,3	10007974	486.00
500	30	K9	158,5	10008006	672.20
600	32	K9	206,0	10007935	910.70
700	25	K9	261,2	10007960	1'313.80
800	16	K9	322,8	10007954	1'509.10
900	16	K9	386,0	10008036	1'821.90
1000	10	K9	451,7	10008082	2'168.60

Pressure pipes for higher pressure ratings and other customised versions on request.  
 \* Country-specific approval

#### Installation accessories

Push / pull protection material for the pipe from page 101.  
 - Internal and external restraint

# PIPES

## WASTE WATER

### DUKTUS ZIPOX+ BLS

Version: Form-fit BLS connection | incl. TYTON seal NBR | excl. shear protection  
 Standard length: 6 metres | other lengths on request  
 Standards: EN 598 | factory standard  
 Material: Ductile cast iron | outer coating zinc-aluminium coating (400 g/m<sup>2</sup>) with top coating epoxy paint | inner lining alumina cement  
 Certified: RAL GZ-699 | ZEROWATERLOSS



DN	Pressure level bar	Wall-thickness class	Weight / m kg	Partno.	Price / m €
150	63	K10	32,0	10066007	137.90
200	42	K9	41,4	10036006	175.00
250	40	K9	55,0	10053339	223.40
300	40	K9	70,8	10072918	309.20
400	30	K9	104,2	10035900	454.90
500	30	K9	140,0	10052882	627.80
600	32	K9	186,4	10035853	865.30
700	25	K9	235,0	10036094	1'263.90
800	16	K9	294,7	10067870	1'476.20
900	16	K9	355,2	10036370	1'663.10
1000	10	K9	420,7	10036324	1'982.50

Pressure pipes for higher pressure levels and other customised versions on request.

#### Installation accessories

Push / pull protection material for the pipe from page 101.

- Cast iron locking bar
- Plastic locking bar
- Clamping rings
- Rubber sleeves
- Shrink-on sleeves

# PIPES

## WASTE WATER

### DUKTUS CMC TYTON

Version: TYTON push-in joint | incl. TYTON NBR gasket | not longitudinally force-fit  
 Standard length: 6 metres | other lengths on request  
 Standards: EN 598 | EN 15 542 | factory standard  
 Materials: Ductile cast iron | outer coating zinc coating (200 g/m<sup>2</sup>) with top coating cement mortar | inner lining alumina cement  
 Certified: RAL GZ-699 | ZEROWATERLOSS



DN	Pressure class □ PFA bar	Weight / m kg	Part no.	Price / m €
80	C100	20,5	10007936	87.60
100	C100	24,9	10008110	89.50
125	C64	31,4	10007933	113.50
150	C64	35,8	10008060	115.20
200	C64	49,8	10007928	152.10
250	C50	63,7	10007926	200.50
300	C50	81,0	10007959	262.40
350	C40	97,7	10008109	353.60
400	C40	116,4	10007931	359.60
500	C40	158,1	10007927	614.70
600	C30	183,3	10008005	695.70
600	C40	213,3	10008108	764.30
700	C30	253,6	10036499	1'130.70
800	C30	313,0	10036092	1'340.40
900	C30	371,5	10036101	1'587.30
1000	C30	432,6	10036088	1'858.10

Pressure pipes for higher pressure ratings and other customised versions on request.  
 \* Country-specific approval

# PIPES

## WASTE WATER

### DUKTUS ZIPOX+ TYTON

Design: TYTON push-in socket joint | incl. TYTON NBR gasket | not longitudinally force-fit  
 Standard length: 6 metres | other lengths on request  
 Standards: EN 598 | factory standard  
 Material: Ductile cast iron | outer coating zinc-aluminium coating (400 g/m<sup>2</sup>) with top coating epoxy paint | inner lining alumina cement  
 Certified: RAL GZ-699 | ZEROWATERLOSS



DN	Pressure class □ PFA bar	Weight / m kg	Part no.	Price / m €
80	C50	13,2	10007868	59.20
100	C50	16,4	10007869	55.80
125	C50	20,9	10007870	82.70
150	C50	25,7	10008002	80.70
200	C50	34,8	10007855	114.50
250	C40	45,5	10007863	145.00
300	C40	58,6	10007864	184.00
350	C30	69,4	10007871	280.20
400	C30	65,7	10007872	305.80
500	C30	117,9	10007873	452.90
600	C30	163,7	10007874	589.10
700	C30	211,5	10007879	855.50
800	C30	272,0	10007880	1'019.60
900	C30	332,4	10007881	1'207.10
1000	C30	399,3	10007882	1'475.80

Pressure pipes for higher pressure ratings and other customised versions on request.  
 \* Country-specific approval

# FITTINGS

## BLS

### DUKTUS EN fitting BLS

90° duckfoot bend

Version: Form-fit BLS connection | incl. TYTON EPDM gasket | excl. shear protection | Flange connection in accordance with EN standard  
 Standards: EN 545 | GSK | factory standard | EN 14 901  
 Materials: Ductile cast iron | epoxy resin coating  
 Certified: DVGW \* | RAL GZ-699 | ZEROWATERLOSS



DN	PN bar	Weight/unit kg	Part no.	Price/unit €
80	100	16,6	10038598	554.80
100	100	21,7	10038599	568.30

### DUKTUS ENH fitting BLS

90° hydrant duckfoot bend with an outlet

Design: Positive-locking BLS connection | excl. shear protection | flange connection  
 Standards: EN 545 | GSK | factory standard | EN 14 901  
 Materials: Ductile cast iron | epoxy resin coating  
 Certified: DVGW \* | RAL GZ-699 | ZEROWATERLOSS



DN	AG	PFA bar	Weight/unit kg	Part no.	Price/unit €
80	1,5"	100	7,3	10038450	632.00
80	2,0"	100	7,3	10038207	736.30

# FITTINGS

## BLS

### DUKTUS MMK fitting BLS

Double socket elbow BLS / angled 11°/ 22°/ 30°/ 45°

Design: Form-fit BLS connection | incl. TYTON gasket EPDM | excl. shear protection  
 Standards: EN 545 | GSK | factory standard | EN 14 901  
 Material: Ductile cast iron | epoxy coating  
 Certified: DVGW \* | RAL GZ-699 | ZEROWATERLOSS



DN	Deflection [°]	PFA bar	Weight/unit kg	Part no.	Price/unit €
80	11	100	10,4	10038563	401.00
100	11	100	14,3	10038214	455.80
125	11	100	20,2	10038477	503.70
150	11	100	22,5	10039841	685.70
200	11	100	36,8	10008226	1'068.20
250	11	100	53,0	10007572	1'359.30
300	11	100	69,4	10040944	1'957.00
400	11	30	116,0	10050893	3'805.50
80	22	100	11,0	10038564	415.70
100	22	100	14,6	10038215	475.50
125	22	100	20,8	10038478	529.80
150	22	100	23,6	10007579	2'382.50
200	22	100	38,6	10008227	1'234.10
250	22	100	56,9	10007573	1'568.10
300	22	100	75,0	10040945	2'273.40
400	22	30	125,5	10050795	4'290.70
80	30	100	10,4	10038565	2'909.90
100	30	100	14,8	10038216	3'270.80
125	30	100	21,0	10038479	3'710.70
150	30	100	24,3	10008225	4'263.20
200	30	100	41,3	10008228	2'918.80
250	30	100	59,3	10007574	2'415.00
300	30	100	77,8	10041374	3'071.20
400	30	30	137,0	10048471	2'757.50
80	45	100	11,4	10038566	2'474.00
100	45	100	14,1	10040062	3'059.10
125	45	100	22,0	10038480	3'059.10
150	45	100	25,8	10007564	3'059.10
200	45	100	41,3	10008137	3'781.70
250	45	100	65,1	10037895	1'576.10
300	45	100	84,5	10040946	2'574.30
400	45	30	149,5	10050732	5'000.30

# FITTINGS

## BLS

### DUKTUS MMK fitting BLS

Double socket elbow BLS / angled 11°/ 22°/ 30°/ 45°

Design: Form-fit BLS connection | incl. TYTON gasket EPDM | excl. shear protection  
 Standards: EN 545 | GSK | factory standard | EN 14 901  
 Material: Ductile cast iron | epoxy coating  
 Certified: DVGW \* | RAL GZ-699 | ZEROWATERLOSS



DN	Deflection [°]	PFA bar	Weight/unit kg	Part no.	Price/unit €
500	11	30	170,0	10050952	8'512.20
600	11	32	184,0	10050960	12'434.30
700	11	25	277,0	10045718	19'619.40
800	11	25	411,0	10050952	21'973.40
900	11	25	529,0	10043135	26'462.70
1000	11	25	651,0	10045515	30'675.60
500	22	30	197,8	10050951	8'812.50
600	22	32	225,0	10051084	13'244.30
700	22	25	320,0	10045717	20'932.30
800	22	25	455,0	10045521	22'528.40
900	22	25	591,0	10043136	27'636.70
1000	22	25	718,0	10045511	32'651.40
500	30	30	205,0	10050949	9'243.70
600	30	32	225,0	10051086	13'477.80
700	30	25	335,0	10045719	21'399.20
800	30	25	485,0	10045525	23'167.10
900	30	25	632,0	10043138	29'201.20
1000	30	25	795,0	10045527	34'588.00
500	45	30	227,0	10050950	9'573.60
600	45	32	268,0	10050959	14'090.00
700	45	25	373,0	10045720	23'781.70
800	45	25	546,0	10045526	23'423.40
900	45	25	713,0	10043143	32'734.60
1000	45	25	875,0	10045516	39'965.10

# FITTINGS

## BLS

### DUKTUS MMQ fitting BLS

Double socket elbow BLS 90°

Version: Form-fit BLS connection | incl. TYTON EPDM seal | excl. shear protection  
 Standards: EN 545 | GSK | factory standard | EN 14 901  
 Material: Ductile cast iron | epoxy coating  
 Certified: DVGW \* | RAL GZ-699 | ZEROWATERLOSS



DN	PFA bar	Weight/unit kg	Part no.	Price/unit €
80	100	11,6	10038567	479.60
100	100	15,5	10038217	548.90
125	100	25,5	10038629	673.40
150	100	30,5	32004695	844.10
200	100	53,4	10007577	1'316.20
250	100	77,0	10037897	1'877.00
300	100	89,0	10041054	2'840.60
400	30	200,5	10050851	7'254.20

# FITTINGS

## BLS

### DUKTUS MK fitting BLS

Socket elbow BLS / Angled 11° / 22° / 30° / 45°

Version: Form-fit BLS connection | incl. TYTON seal EPDM | excl. shear protection  
 Standards: EN 545 | GSK | factory standard | EN 14 901  
 Material: Ductile cast iron | epoxy coating  
 Certified: DVGW \* | RAL GZ-699 | ZEROWATERLOSS



DN	Deflection [°]	PFA bar	Weight/unit kg	Part no.	Price/unit €
80	11	100	8,2	10038557	399.70
100	11	100	11,8	10038211	512.80
125	11	100	15,1	10038553	552.30
150	11	100	21,0	10039092	686.60
200	11	100	32,5	10039093	847.50
250	11	100	51,0	32000224	1'594.80
300	11	100	73,0	32000220	1'976.30
400	11	63	129,0	10040988	4'508.80
500	11	50	207,5	10042040	10'275.60

80	22	100	8,4	10038558	412.80
100	22	100	12,1	10038551	507.90
125	22	100	15,5	10038554	604.50
150	22	100	21,5	10039899	838.40
200	22	100	35,0	10007754	904.70
250	22	100	55,0	32000223	1'705.90
300	22	100	80,0	32000219	2'116.80
400	22	63	141,0	10040989	4'804.50
500	22	50	234,0	10041320	10'479.80

80	30	100	8,5	10038559	412.80
100	30	100	12,4	10038552	602.60
125	30	100	15,8	10038555	700.90
150	30	100	22,0	10007588	978.80
200	30	100	36,0	10007752	988.10
250	30	100	55,8	32000222	1'624.30
300	30	100	84,0	32000242	2'183.70
400	30	63	153,0	10040990	4'997.20
500	30	50	238,0	10041321	10'793.40

80	45	100	9,0	10038560	481.30
100	45	100	12,6	10038212	625.60
125	45	100	16,2	10038556	687.80
150	45	100	25,0	10007587	1'091.50
200	45	100	39,0	10007575	1'512.20
250	45	100	64,0	32000221	2'197.30
300	45	100	86,0	10040376	2'329.00
400	45	63	169,0	10037737	5'329.50
500	45	50	260,0	10037739	11'511.20

# FITTINGS

## BLS

### DUKTUS flanged socket BLS

Flanged socket piece

Version: Form-fit BLS connection | incl. TYTON EPDM gasket | excl. shear protection |  
 Flange connection in accordance with EN standard  
 Standards: EN 545 | GSK | factory standard | EN 14 901  
 Material: Ductile cast iron | epoxy resin coating  
 Certified: DVGW \* | RAL GZ-699 | ZEROWATERLOSS



DN	PN bar	Weight/unit kg	Part no.	Price/unit €
80	10-40	9,7	10036772	324.80
80	63	15,2	10038569	519.00
80	100	15,2	10038570	613.60
100	10/16	12,0	10038208	364.30
100	25/40	12,7	10038413	583.00
100	63	16,2	10038414	654.90
100	100	20,0	10038415	800.30
125	10/16	15,6	10007599	428.20
125	25/40	18,2	10008199	640.40
125	63	23,4	10008200	767.80
125	100	26,4	10008201	1'102.60
150	10/16	20,9	32004747	487.30
150	25/40	22,1	10007597	729.00
150	63	33,0	10008207	874.50
150	100	32,5	10008229	1'230.20
200	10	28,0	10008208	816.60
200	16	30,6	10008128	939.10
200	25	29,0	10008202	1'143.20
200	40	33,5	10007606	1'304.80
200	63	28,0	10008203	1'468.00
200	100	56,6	10008209	1'793.00
250	10	39,8	10008129	1'100.20
250	16	45,0	10007596	1'265.00
250	25	47,0	10008210	1'648.80
250	40	50,0	10007595	1'758.20
250	63	66,2	10008211	1'976.90
250	100	95,0	10008204	2'416.20
300	10	49,5	10041022	1'584.50
300	16	50,0	10041023	1'821.20
300	25	54,0	10041024	2'213.10
300	40	72,3	10041476	2'528.10
300	63	94,0	10041478	2'841.70

# FITTINGS

## BLS

### DUKTUS EU flanged socket BLS

Flanged socket piece

Version: Form-fit BLS connection | incl. TYTON EPDM gasket | excl. shear protection |  
 Flange connection in accordance with EN standard

Standards: EN 545 | GSK | factory standard | EN 14 901

Material: Ductile cast iron | epoxy resin coating

Certified: DVGW \* | RAL GZ-699 | ZEROWATERLOSS



DN	PN bar	Weight/unit kg	Part no.	Price/unit €
400	10	90,0	10048469	3'223.80
400	16	89,0	10050428	3'703.80
400	25	95,0	10051578	4'505.70
500	10	127,0	10050953	5'226.80
500	16	150,0	10050954	6'007.30
500	25	165,0	10050955	7'307.20
600	10	140,0	10050961	7'356.90
600	16	158,0	10050962	8'454.30
600	25	170,0	10050963	10'283.10
700	10	205,0	10045721	12'249.30
700	16	215,0	10043512	14'079.80
700	25	225,0	10043916	17'130.00
800	10	238,0	10045519	12'512.60
800	16	260,0	10043464	14'380.80
800	25	280,0	10043465	17'493.00
900	10	345,0	10046434	18'810.20
900	16	368,0	10043173	21'618.80
900	25	425,0	10043175	26'301.90
1000	10	428,0	10045510	19'987.50
1000	16	462,0	10043549	22'972.50
1000	25	515,0	10043261	27'944.70

# FITTINGS

## BLS

### DUKTUS F fitting BLS

Single-flange fitting with a weld bead

Version: Form-fit BLS connection | excl. shear protection |  
Flange connection in accordance with EN standard

Standards: EN 545 | GSK | factory standard | EN 14 901

Material: Ductile cast iron | epoxy resin coating

Certified: DVGW \* | RAL GZ-699 | ZEROWATERLOSS



DN	PFA bar	Weight/unit kg	Part no.	Price/unit €
80	10-40	8,7	10038549	463.80
100	10/16	9,8	10038210	475.20
100	25/40	10,9	10038419	666.20
100	63	15,5	10038420	855.70
100	100	17,9	10038421	1'046.60
125	10/16	14,6	10038550	630.30
150	10/16	19,6	10038209	630.30
150	25	22,2	10038422	881.80
150	40	23,1	10038429	1'007.40
150	63	32,5	10038423	1'134.90
150	100	36,0	10038424	1'386.40
200	10	24,6	10064929	827.90
200	16	29,4	10064930	952.00
200	25	24,5	10007594	1'159.40
200	40	29,3	10007593	1'326.00
200	63	51,5	10008241	1'490.80
200	100	57,5	10008242	1'822.30
250	10	43,5	10041027	1'117.00
250	16	43,0	10041028	1'281.80
250	25	48,0	10038303	1'564.20
300	10	46,5	32000248	1'430.40
300	16	46,5	32000225	1'644.40
300	25	62,0	10042241	2'001.90
400	10	74,5	10008188	2'535.80
400	16	79,5	10043224	2'916.40
400	25	84,0	10043393	3'550.00
500	10	92,5	10037604	4'351.70
500	16	108,0	10037607	5'004.90
600	10	190,0	10046668	5'578.00
600	16	220,0	10042957	6'415.80
600	25	230,0	10043552	7'810.20
700	10	251,0	10045975	11'410.70
700	16	275,0	10045977	13'122.00
800	10	305,0	10045971	13'598.80
800	16	335,0	10045973	15'639.90
900	10	279,0	10035522	21'565.80
900	16	280,0	10032443	24'800.60
1000	10	441,0	10045983	22'310.30
1000	16	470,0	10045985	25'656.30

# FITTINGS

## BLS

### DUKTUS GDR fitting BLS

Smooth pipes with two weld beads

Version: Form-fit BLS connection  
 Standards: EN 545 | GSK | factory standard | EN 14 901  
 Material: Ductile cast iron | epoxy coating  
 Certified: DVGW \* | RAL GZ-699 | ZEROWATERLOSS



DN	PFA bar	Installation length mm	Weight/unit kg	Part no.	Price/unit €
80	100	400	8,5	10040987	248.30
80	100	800	14,8	10040943	395.20
100	100	400	9,5	10007592	305.40
100	100	800	16,0	10007605	365.90
125	100	400	11,8	10041034	424.50
125	100	800	20,5	10008132	493.20
150	100	400	15,3	10008247	548.60
150	100	800	27,0	10007591	741.50
200	100	400	21,0	10040986	764.20
200	100	800	21,0	10007603	747.90
250	40	800	54,0	10038649	1'254.00
300	40	800	63,0	10038650	1'575.80
400	30	800	79,0	10008206	2'098.20
500	30	800	104,0	10008205	2'668.20

# FITTINGS

## BLS

### DUKTUS MMA fitting BLS

Double socket piece BLS with a flanged branch

Version: Form-fit BLS connection | incl. TYTON EPDM gasket | excl. shear protection |  
Flange connection in accordance with EN standard

Standards: EN 545 | GSK | factory standard | EN 14 901

Material: Ductile cast iron | epoxy resin coating

Certified: DVGW \* | RAL GZ-699 | ZEROWATERLOSS



DN	dn	PN bar	Weight/unit kg	Part no.	Price/unit €
80	50	10-40	15,2	10008189	386.40
80	80	10-40	16,0	10038616	386.40
100	50	10-40	24,0	10038346	682.70
100	80	10-40	20,0	10038617	682.70
100	100	10-40	22,3	10038619	708.90
125	80	10-40	25,8	10007602	866.10
125	100	10-40	27,5	10008238	903.70
150	80	10-40	30,6	10007566	1'038.40
150	100	10/16	33,0	10007565	1'038.40
150	150	10/16	39,6	10008197	933.90
150	150	40	42,9	10007616	1'489.10
200	80	10/40	45,4	10008196	1'478.00
200	100	10/16	46,8	10008212	1'481.20
200	150	10/16	51,6	10008213	1'554.70
200	200	10	57,4	10008198	1'682.00
200	200	16	57,0	10007586	1'756.90
200	200	40	66,0	10007615	2'395.70
250	80	10/40	62,0	10008214	1'798.60
250	100	10/16	57,5	10007585	1'966.80
250	150	10/16	70,0	10008121	2'040.20
250	200	16	76,0	10008215	2'149.40
300	80	10/40	76,6	10008192	2'657.70
300	100	10/16	81,2	10008216	2'657.70
300	150	10/16	80,0	10008193	2'657.70
300	300	16	111,8	10008195	3'285.50

# FITTINGS

## BLS

### DUKTUS MMA fitting BLS

Double socket piece BLS with a flanged branch

Version: Form-fit BLS connection | incl. TYTON EPDM gasket | excl. shear protection |  
 Flange connection in accordance with EN standard  
 Standards: EN 545 | GSK | factory standard | EN 14 901  
 Material: Ductile cast iron | epoxy resin coating  
 Certified: DVGW \* | RAL GZ-699 | ZEROWATERLOSS



DN	dn	PN bar	Weight/unit kg	Part no.	Price/unit €
400	150	10/16	144,0	10051106	5'311.10
400	150	25/40	152,0	10051107	7'948.20
400	200	10	169,0	10043778	5'654.00
400	200	16	169,0	10043779	6'215.80
400	200	25	171,0	10044202	8'462.60
400	300	10	170,0	10043776	6'072.00
400	300	16	170,0	10043777	6'674.50
400	400	10	198,0	10043642	7'296.70
400	400	16	203,0	10043643	8'385.80
400	400	25	203,0	10042178	10'201.50
500	200	10	229,0	10043382	11'683.10
500	200	16	229,0	10043821	13'428.80
500	200	25	230,0	10040406	16'337.00
500	300	10	229,0	10043383	13'134.90
500	300	16	229,0	10039746	15'097.70
500	300	25	252,0	10040790	18'369.90
500	400	10	198,0	10046450	14'019.90
500	400	16	198,0	10040788	16'041.10
500	400	25	202,0	10042815	19'609.30
500	500	10	315,0	10051098	14'075.40
500	500	16	331,0	10051100	16'180.30
500	500	25	345,0	10051102	19'687.70
500	500	40	372,0	10051104	22'493.00

# FITTINGS

## BLS

### DUKTUS MMA fitting BLS

Double socket piece BLS with a flanged branch

Design: Form-fit BLS connection | incl. TYTON EPDM gasket | excl. shear protection |  
Flange connection in accordance with EN standard

Standards: EN 545 | GSK | factory standard | EN 14 901

Material: Ductile cast iron | epoxy coating

Certified: DVGW \* | RAL GZ-699 | ZEROWATERLOSS



DN	dn	PN bar	Weight/unit kg	Part no.	Price/unit €
600	150	16	267,0	10043384	13'938.30
600	150	25	278,0	10043754	19'480.30
600	200	10	240,0	10043385	14'227.30
600	200	16	240,0	10038231	15'552.10
600	300	10	266,0	10043386	15'713.30
600	300	16	266,0	10043954	18'056.50
600	300	25	273,0	10039950	21'964.10
600	400	10	286,0	10043387	17'463.60
600	400	16	305,0	10044091	20'071.40
600	400	25	325,0	10044092	24'414.90
600	600	10	393,0	10051088	18'639.30
600	600	16	420,0	10051089	21'422.00
600	600	25	434,0	10051090	26'060.90
800	150	10/16	630,0	10043780	27'791.50
800	200	10	680,0	10046202	27'791.50
800	200	25	655,0	10043729	38'861.00
800	400	10	665,0	10046204	29'334.60
800	400	25	735,0	10043756	41'019.70
800	600	10	698,0	10046206	30'304.60
800	600	16	698,0	10042622	34'832.70
800	800	10	745,0	10046118	35'049.70
900	100	10	650,0	10034245	33'392.70
900	150	10	680,0	10034249	33'564.10
900	200	10	700,0	10034251	33'961.10
900	300	10	740,0	10034257	34'697.40
1000	100	10	850,0	10034259	36'016.70
1000	150	10	720,0	10041956	36'175.20
1000	200	10	720,0	10040551	36'448.00
1000	300	10	720,0	10043584	36'764.60
1000	300	16	720,0	10043585	42'251.20
1000	300	25	685,0	10040786	51'395.50

# FITTINGS

## BLS

### DUKTUS MMB fitting BLS

Double socket piece BLS with a 90° branched socket

Version: Form-fit BLS connection | incl. TYTON EPDM seal | excl. shear protection  
 Standards: EN 545 | GSK | factory standard | EN 14 901  
 Material: Ductile cast iron | epoxy coating  
 Certified: DVGW \* | RAL GZ-699 | ZEROWATERLOSS



DN	dn	PFA bar	Weight/unit kg	Part no.	Price/unit €
80	80	100	16,9	10038622	655.50
100	80	100	20,2	10038623	721.70
100	100	100	23,2	10038561	722.10
125	80	100	14,1	10038624	872.40
125	100	100	27,2	10038620	908.60
125	125	100	31,3	10038625	1'011.70
150	80	100	32,7	10038213	946.60
150	100	100	36,3	10038562	981.20
150	125	100	41,0	10038627	1'177.40
150	150	100	39,8	32004818	1'228.50
200	80	100	47,6	10008217	1'482.50
200	100	100	46,3	10008218	1'505.70
200	125	100	58,0	10038628	1'638.20
200	150	100	54,2	10008135	1'664.70
200	200	100	63,4	10007583	1'843.70
250	80	100	72,0	10039701	2'107.20
250	100	100	62,4	10008219	2'107.20
250	125	100	72,2	10039704	2'313.50
250	150	100	75,0	10008220	2'313.50
250	200	100	77,0	10008221	2'526.90
250	250	100	89,0	10007582	2'702.60
300	80	85	93,0	10039699	2'919.00
300	100	85	82,0	10007581	2'919.00
300	150	85	87,2	10008222	2'986.70
300	200	85	95,8	10008194	3'021.90
300	250	85	109,0	10008223	3'681.10
300	300	85	140,0	10008224	4'078.80
400	400	30	236,0	60002795	10'603.80
500	500	30	415,0	60005335	16'786.00

# FITTINGS

## BLS

### DUKTUS MB fitting BLS

Socket head end piece BLS with a 90° branched socket

Version: Positive locking BLS-joint  
 Standards: EN 545 | GSK | Company standard | EN 14 901  
 Materials: Ductile cast iron | Epoxy resin coating



DN	dn	PFA bar	Weight/unit kg	Part no.	Price/unit €
400	80	63	179,5	10042111	7'659.50
400	300	63	211,5	10041971	8'566.00

# FITTINGS

## BLS

### DUKTUS HAS fitting BLS

House connection piece with a 2" IT outlet with Whitworth (Europe) threads

Version: Form-fit BLS connection | incl. TYTON EPDM seal | excl. shear protection  
 Standards: EN 545 | GSK | factory standard | EN 14 901  
 Material: Ductile cast iron | epoxy coating  
 Certified: DVGW \* | RAL GZ-699 | ZEROWATERLOSS  
 Standards: EN 545 | GSK | factory standard | EN 14 901



DN	PFA bar	Weight/unit kg	Part no.	Price/unit €
80	100	10,5	10038596	515.60
100	100	14,0	10038205	516.00
125	100	18,0	10038597	643.80
150	100	23,5	10038481	838.40
200	100	35,0	10038482	1'210.10
250	100	53,0	10038548	1'338.60
300	85	72,0	10038206	2'074.30

### DUKTUS HAS fitting BLS

House connection piece with a 2" IT outlet with NPT (North America) threads

Design: Form-fit BLS connection | incl. TYTON EPDM gasket | excl. shear protection  
 Standards: EN 545 | GSK | factory standard | EN 14 901  
 Material: Ductile cast iron | epoxy coating



DN	PFA bar	Weight/unit kg	Part no.	Price/unit €
80	100	10,5	10057976	
100	100	14,0	10054043	
125	100	18,0	10057977	
150	100	23,5	10057978	
200	100	35,0	10058151	

# FITTINGS

## BLS

### DUKTUS MMR fitting BLS BLS double socket taper

Version: Form-fit BLS connection | incl. TYTON EPDM seal | excl. shear protection  
 Standards: EN 545 | GSK | factory standard | EN 14 901  
 Material: Ductile cast iron | epoxy coating  
 Certified: DVGW \* | RAL GZ-699 | ZEROWATERLOSS



DN1	DN2	PFA bar	Weight/unit kg	Part no.	Price/unit €
100	80	100	11,9	10038630	470.00
125	80	100	16,0	10038376	674.80
125	100	100	17,2	10008134	698.00
150	80	100	19,0	10038633	732.70
150	100	100	21,0	10038568	765.60
150	125	100	20,8	10038634	774.20
200	100	100	29,6	10008244	1'025.80
200	150	100	30,0	10038218	1'057.30
250	150	100	44,2	10038636	1'382.20
250	200	100	45,8	10038637	1'463.80
300	150	100	53,0	10038638	1'876.30
300	200	100	59,0	10008245	1'932.80
300	250	100	62,8	10038640	2'000.80
400	300	63	111,8	32006353	4'167.00
500	400	30	160,0	10067812	6'824.20

# FITTINGS

## BLS

### DUKTUS P plug BLS

Socket sealing plug BLS with 2" internal thread

Version: Form-fit BLS connection | incl. TYTON EPDM seal | excl. thrust protection |  
Outlet with 2" internal thread

Standards: EN 545 | GSK | factory standard | EN 14 901

Material: Ductile cast iron | epoxy coating

Certified: DVGW \* | RAL GZ-699 | ZEROWATERLOSS



DN	PFA bar	Weight/unit kg	Part no.	Price/unit €
80	100	3,6	10038641	594.40
100	100	4,6	10038219	594.40
125	100	6,7	10038642	692.40
150	100	9,0	10038220	716.90
200	100	14,3	10038221	953.70
250	100	27,5	10038643	1'440.30
300	100	49,5	10038644	1'995.40

# FITTINGS

## BLS

### DUKTUS U fitting BLS

Double socket collar

Version: Form-fit BLS connection | incl. TYTON EPDM seal | excl. shear protection  
 Standards: EN 545 | GSK | factory standard | EN 14 901  
 Material: Ductile cast iron | epoxy coating  
 Certified: DVGW \* | RAL GZ-699 | ZEROWATERLOSS



DN	PFA bar	Weight/unit kg	Part no.	Price/unit €
80	100	12,5	10008239	602.00
100	100	17,0	10038222	839.40
125	100	24,0	10008240	1'003.40
150	100	30,5	10038223	1'134.70
200	100	45,5	10038224	1'876.40
250	100	67,0	10038225	2'481.00
300	85	96,0	32000217	2'688.60
400	30	115,0	10051217	5'356.70
500	30	131,0	10037638	11'441.50

### DUKTUS MM fitting BLS

Push-over joint BLS

Version: Form-fit BLS connection | incl. TYTON seal EPDM | excl. thrust-resisting ring  
 Standards: EN 545 | GSK | factory standard | EN 14 901  
 Material: Ductile cast iron | epoxy coating  
 Certified: RAL GZ-699 | ZEROWATERLOSS



DN	PFA bar	Weight/unit kg	Part no.	Price/unit €
600	40	180,0	10038283	11'076.70
700	35	281,5	10038284	14'506.40
800	35	369,0	10042619	16'193.40
900	30	585,0	10042327	22'888.50
1000	25	612,0	10042013	23'438.20

# FITTINGS

## BRS / TYTON

### VONROLL / DUKTUS EN fitting

#### 90° duckfoot bend

Version: HYDROTIGHT / BRS / VRS-T restrained | incl. TYTON gasket EPDM | excl. shear protection  
 TYTON not restrained | incl. TYTON gasket EPDM | Flange connection to EN standard

Standards: EN 545 | GSK | factory standard | EN 14 901

Materials: Ductile cast iron | epoxy coating

Certified: DVGW \* | RAL GZ-699 | ZEROWATERLOSS



DN	PN bar	Weight/unit kg	Part no.	Price/unit €
80	10/16	13,5	10048447	187.60
100	10/16	18,5	10048298	204.70

# FITTINGS

## BRS / TYTON

### VONROLL / DUKTUS MMK fitting

#### Double socket elbow

Version: BRS / longitudinally locked | without shear protection  
 TYTON not longitudinally locked | includes TYTON EPDM gasket | 11¼° or 22½° elbow

Standards: EN 545 | Company standard | EN 14 901 | GSK

Material: Ductile cast iron | Epoxy resin coating or full enamel



#### EPOXY

DN	Deflection [°]	PFA bar	Weight/unit kg	Part no.	Price/unit €
80	11	100	8,3	10047353	116.70
100	11	100	9,8	10047180	101.70
125	11	64	12,0	10051936	129.00
150	11	64	15,0	10047231	147.80
200	11	64	21,5	10047235	229.50
250	11	50	31,0	10047243	343.20
300	11	50	40,5	10047262	468.60
400	11	40	58,0	10047266	863.60
500	11	40	90,0	10047310	1'761.60
600	11	40	124,0	10047329	3'054.10
700	11	30	260,0	10045827	5'030.00
800	11	30	285,0	10052434	6'725.50
1000	11	30	499,0	10052472	7'390.10

#### FULLY ENAMELLED

Part no.	Price/unit €
10043704	158.80
10043708	138.20
10039498	172.30
10043711	196.00
10043715	309.10
10039502	463.40
10043719	632.20
10045945	1'163.30
10045948	2'467.90
10045952	4'182.60
10039505	6'710.10
10039509	9'124.30
10039513	10'353.20



DN	Deflection [°]	PFA bar	Weight/unit kg	Part no.	Price/unit €
80	22	100	8,5	10047356	118.80
100	22	100	10,0	10047181	106.40
125	22	64	13,0	10051940	152.80
150	22	64	16,0	10047232	168.90
200	22	64	23,5	10047237	242.50
250	22	50	33,0	10047244	407.60
300	22	50	44,5	10047263	513.70
400	22	40	66,5	10047293	902.30
500	22	40	105,0	10047315	1'903.30
600	22	40	147,0	10047333	3'341.20
700	22	30	280,0	10045828	5'594.40
800	22	30	308,0	10052437	7'629.60
1000	22	30	579,0	10052458	8'263.40

Part no.	Price/unit €
10043705	163.30
10039496	141.30
10039499	187.50
10043712	207.90
10043716	294.80
10039503	551.90
10043720	694.10
10045946	1'201.30
10045949	2'665.60
10045953	4'489.40
10039506	7'226.50
10039510	10'238.10
10039514	11'576.20

# FITTINGS

## BRS / TYTON

### VONROLL / DUKTUS MMK fitting

#### Double socket elbow

Version: BRS / longitudinally locked | without shear protection  
 TYTON not longitudinally locked | includes TYTON EPDM seal | 30° or 45° elbow

Standards: EN 545 | Company standard | EN 14 901 | GSK

Material: Ductile cast iron | Epoxy resin coating or full enamel



DN	Deflection [°]	PFA bar	Weight/unit kg	EPOXY		FULLY ENAMELLED	
				Part no.	Price/unit €	Part no.	Price/unit €
80	30	100	8,6	10047363	118.80	10043706	163.50
100	30	100	10,5	10047182	108.00	10039497	142.90
125	30	64	13,0	10051944	165.90	10039500	202.20
150	30	64	16,5	10047233	173.30	10043713	214.30
200	30	64	24,5	10048749	251.10	10043717	340.20
250	30	50	34,0	10047260	364.90	10039504	482.30
300	30	50	46,5	10047264	531.40	10043721	705.70
400	30	40	69,2	10047300	972.20	10045947	1'283.30
500	30	40	109,0	10047319	2'054.80	10045950	2'879.00
600	30	40	155,0	10047334	3'483.20	10045886	4'636.50
700	30	30	305,0	10045829	6'795.40	10039507	9'059.90
800	30	30	360,0	10052208	8'308.60	10039511	11'074.30
1000	30	30	657,0	10052460	9'065.20	10039515	12'698.60



DN	Deflection [°]	PFA bar	Weight/unit kg	EPOXY		FULLY ENAMELLED	
				Part no.	Price/unit €	Part no.	Price/unit €
80	45	100	8,8	10047365	123.60	10043707	170.00
100	45	100	11,0	10047230	110.00	10043710	146.40
125	45	64	14,0	10051948	178.70	10039501	222.20
150	45	64	17,0	10047234	190.50	10043714	234.90
200	45	64	27,0	10047241	275.00	10043718	371.20
250	45	50	37,5	10047261	399.30	10052747	529.00
300	45	50	52,5	10047265	606.90	10043722	811.00
400	45	40	82,2	10047306	1'081.50	10045747	1'514.90
500	45	40	135,0	10047325	2'701.00	10045951	3'541.10
600	45	40	195,0	10047337	3'672.90	10045887	4'878.80
700	45	30	340,0	10045830	6'535.70	10039508	8'588.90
800	45	30	426,0	10047348	8'966.30	10039512	11'882.10
1000	45	30	740,0	10052462	9'733.80	10039516	13'635.10

# FITTINGS

## BRS / TYTON

### VONROLL / DUKTUS MMQ fitting

Double socket elbow 90°

Version: BRS / longitudinally locked | without shear protection  
 TYTON not longitudinally locked | includes TYTON EPDM gasket | 90° elbow

Standards: EN 545 | Company standard | EN 14 901 | GSK

Material: Ductile cast iron | Epoxy resin coating or full enamel



#### EPOXY

DN	PFA bar	Weight/unit kg	Part no.	Price/unit €
80	100	9,8	10046924	126.60
100	100	12,0	10046909	137.30
125	64	16,1	10051952	244.40
150	64	21,0	10046912	255.00
200	64	32,0	10046915	356.80
250	50	46,0	10047003	990.60
300	50	67,0	10046917	1'130.00
400	40	127,0	10040151	2'354.20
500	40	237,0	10046920	3'706.40
600	40	368,0	10046922	4'948.90

#### FULLY ENAMELLED

Part no.	Price/unit €
10039517	167.10
10039518	182.00
10039519	328.00
10039520	342.00
10039522	470.20
10039523	1'388.00
10039524	1'583.80
10039525	3'297.30
10039526	5'190.30
10039527	6'501.20

# FITTINGS

## BRS / TYTON

### VONROLL / DUKTUS MK fitting

#### Elbow single socket

Version: BRS with longitudinal locking | without shear protection  
 TYTON without longitudinal locking | includes TYTON EPDM seal | 11¼° or 22½° elbow

Standards: in accordance with company standard | EN 14 901 | GSK

Material: Ductile cast iron | Epoxy resin coating or full enamel

#### EPOXY

#### FULLY ENAMELLED



DN	Deflection [°]	PFA bar	Weight/unit kg	Part no.	Price/unit €	Part no.	Price/unit €
80	11	100	7,5	10051884	<b>162.00</b>	10039387	<b>226.90</b>
100	11	100	8,2	10051733	<b>152.10</b>	10039391	<b>210.30</b>
125	11	64	11,0	10051737	<b>214.40</b>	10039395	<b>293.10</b>
150	11	64	14,0	10051864	<b>237.30</b>	10039399	<b>311.40</b>
200	11	64	20,0	10051844	<b>334.20</b>	10039403	<b>468.90</b>



DN	Deflection [°]	PFA bar	Weight/unit kg	Part no.	Price/unit €	Part no.	Price/unit €
80	22	100	8,1	10051888	<b>156.90</b>	10039388	<b>220.10</b>
100	22	100	8,5	10051734	<b>158.10</b>	10039392	<b>216.40</b>
125	22	64	12,0	10051738	<b>219.90</b>	10039396	<b>298.90</b>
150	22	64	15,0	10051868	<b>245.10</b>	10039400	<b>322.40</b>
200	22	64	27,0	10051848	<b>427.20</b>	10039404	<b>561.10</b>

# FITTINGS

## BRS / TYTON

### VONROLL / DUKTUS MK fitting

#### Elbow single socket

Version: BRS with longitudinal force locking | without shear protection  
 TYTON without longitudinal force locking | includes TYTON EPDM seal | 30° or 45° elbow

Standards: in accordance with company standard | EN 14 901 | GSK

Material: Ductile cast iron | Epoxy resin coating or full enamel



#### EPOXY

#### FULLY ENAMELLED

DN	Deflection [°]	PFA bar	Weight/unit kg	Part no.	Price/unit €
80	30	100	8,2	10051892	<b>180.20</b>
100	30	100	12,0	10051735	<b>169.40</b>
125	30	64	12,5	10051739	<b>246.30</b>
150	30	64	17,9	10051872	<b>294.60</b>
200	30	64	29,0	10051852	<b>387.10</b>

Part no.	Price/unit €
10039389	<b>237.20</b>
10039393	<b>234.60</b>
10039397	<b>328.90</b>
10039401	<b>387.10</b>
10039405	<b>510.00</b>

DN	Deflection [°]	PFA bar	Weight/unit kg	Part no.	Price/unit €
80	45	100	8,5	10051896	<b>185.80</b>
100	45	100	9,0	10051736	<b>185.40</b>
125	45	64	12,5	10051740	<b>255.40</b>
150	45	64	18,0	10051876	<b>287.20</b>
200	45	64	25,5	10051856	<b>456.40</b>

Part no.	Price/unit €
10039390	<b>252.80</b>
10039394	<b>241,20</b>
10039398	<b>342.00</b>
10039402	<b>378.60</b>
10039406	<b>600.20</b>

# FITTINGS

## BRS / TYTON

### VONROLL / DUKTUS MQ fitting

90° elbow single socket

Version: BRS / longitudinally locked | without shear protection  
 TYTON not longitudinally locked | includes TYTON EPDM seal

Standards: in accordance with company standard | EN 14 901 | GSK

Material: Ductile cast iron | Epoxy resin coating or full enamel



#### EPOXY

DN	PFA bar	Weight/unit kg	Part no.	Price/unit €
80	100	13,2	10051900	318.80
100	100	13,3	10051741	250.50
125	64	18,0	10051742	421.10
150	64	22,4	10051880	448.30
200	64	37,3	10051860	599.10

#### FULLY ENAMELLED

Part no.	Price/unit €
10039538	446.90
10039539	351.30
10039540	589.90
10039541	629.30
10039542	799.90

# FITTINGS

## BRS / TYTON

### VONROLL / DUKTUS MMA fitting

#### Double socket tee with flanged branch

Version: BRS / longitudinally locked | without shear protection  
 TYTON not longitudinally locked | includes TYTON EPDM gasket | without flange connection  
 Branch flange

Standards: EN 545 | EN 1092-2 | Company standard | EN 14 901 | GSK

Material: Ductile cast iron | Epoxy resin coating or full enamel



EPOXY						FULLY ENAMELLED	
DN1	DN2	PN bar	Weight/unit kg	Part no.	Price/unit €	Part no.	Price/unit €
80	80	10/16	14,5	10046908	192.30	10045596	254.00
100	40	10/16	14,5	10045232	175.40	10039413	231.60
100	50	10/16	13,3	10045236	177.30	10039414	235.10
100	80	10/16	17,0	10045240	193.60	10043694	261.00
100	100	10/16	18,0	10045229	197.30	10043695	268.90
125	40	10/16	18,3	10045258	262.20	10039415	368.00
125	80	10/16	19,3	10045264	303.20	10039418	426.00
125	100	10/16	20,4	10045245	298.70	10039420	393.50
125	125	10/16	24,5	10045253	474.10	10039422	668.40
150	40	10/16	20,5	10045291	288.00	10039424	404.10
150	50	10/16	20,6	10045298	350.30	10039426	462.10
150	80	10/16	25,5	10045304	271.90	10043696	358.00
150	100	10/16	26,4	10045273	284.40	10043697	375.00
150	150	10/16	30,9	10045285	328.10	10043698	432.90
200	40	10/16	25,5	10045340	473.50	10039428	623.90
200	50	10/16	25,6	10050673	592.00	10039430	833.70
200	80	10/16	30,0	10046774	393.70	10045694	530.10
200	100	10/16	32,5	10045314	426.40	10043699	572.70
200	150	10/16	40,0	10045323	466.30	10043700	613.60
200	200	10	46,0	10045332	639.90	10043701	864.60
200	200	16	46,0	10046967	665.20	10039431	907.10

# FITTINGS

## BRS / TYTON

### VONROLL / DUKTUS MMA fitting

#### Double socket tee with flanged branch

Version: BRS / longitudinally locked | without shear protection  
 TYTON not longitudinally locked | includes TYTON EPDM gasket | without flange connection  
 Branch flange

Standards: EN 545 | EN 1092-2 | Company standard | EN 14 901 | GSK

Material: Ductile cast iron | Epoxy resin coating or full enamel



EPOXY						FULLY ENAMELLED	
DN1	DN2	PN bar	Weight/unit kg	Part no.	Price/unit €	Part no.	Price/unit €
250	80	10/16	37,9	10046802	510.50	10039432	698.00
250	100	10/16	39,7	10046780	568.50	10039433	780.10
250	150	10/16	45,0	10046785	609.30	10039434	833.40
250	200	10	52,4	10046788	787.80	10039435	1'068.90
250	200	16	52,5	10050971	826.60	10039436	1'116.10
250	250	10	60,5	10046797	745.10	10039437	1'016.80
250	250	16	60,7	10051625	842.20	10039438	1'147.70
300	80	10/16	48,5	10046838	622.60	10039439	821.20
300	100	10/16	50,0	10046806	609.80	10039440	804.10
300	150	10/16	57,0	10046809	730.20	10043702	962.70
300	200	10	66,0	10046817	849.50	10043703	1'173.60
300	200	16	66,5	10046818	1'018.10	10039441	1'396.00
300	250	10	74,3	10046823	1'101.60	10039442	1'498.50
300	250	16	75,5	10051557	1'249.10	10039443	1'703.70
300	300	10	78,0	10046828	1'078.40	10045940	1'474.90
300	300	16	79,0	10050445	1'295.50	10039444	1'788.80
400	80	10/16	71,3	10046867	1'307.80	10039445	1'784.40
400	100	10/16	74,6	10049691	1'348.60	10039446	1'814.40
400	150	10/16	85,5	10046846	1'163.50	10039447	1'630.80
400	300	10	114,0	10052470	2'242.90	10039448	3'076.60
400	300	16	120,0	10052061	2'467.20	10039449	3'384.30
400	400	10	140,6	10046859	2'139.50	10045741	2'950.40
400	400	16	145,0	10043755	2'556.00	10039450	3'504.30

# FITTINGS

## BRS / TYTON

### VONROLL / DUKTUS MMA fitting

Double socket tee with flanged branch

Version: BRS / longitudinally locked | without shear protection  
 TYTON not longitudinally locked | includes TYTON EPDM gasket | without flange connection  
 Branch flange

Standards: EN 545 | EN 1092-2 | Company standard | EN 14 901 | GSK

Material: Ductile cast iron | Epoxy resin coating or full enamel



EPOXY						FULLY ENAMELLED	
DN1	DN2	PN bar	Weight/unit kg	Part no.	Price/unit €	Part no.	Price/unit €
500	80	10/16	109,0	10049857	2'904.60	10039451	3'897.70
500	100	10/16	114,0	10050807	2'848.40	10039452	3'910.30
500	150	10/16	129,0	10050806	3'009.20	10039453	4'042.90
500	200	10	141,0	10051202	2'893.20	10045941	3'803.50
500	200	16	141,0	10050805	3'307.20	10039454	4'344.40
500	250	10	159,0	10052386	3'102.50	10039455	4'344.40
500	250	16	159,0	10037516	3'315.70	10039456	4'643.00
500	300	10	163,0	10052387	4'099.90	10039457	5'025.90
500	300	16	173,0	10043598	3'839.30	10039458	5'528.50
500	400	10	180,0	10052388	3'513.50	10039459	4'920.90
500	400	16	195,0	10045898	5'156.90	10039460	7'028.00
500	500	10	212,0	10052389	3'864.70	10045942	5'076.10
500	500	16	225,0	10039995	5'170.00	10039461	7'239.30
600	80	10/16	162,9	10052390	3'082.50	10039462	4'317.80
600	100	10/16	163,6	10051601	3'902.40	10039463	5'129.60
600	150	10/16	164,2	10052393	4'327.20	10039464	5'685.70
600	200	10	167,1	10052394	3'866.80	10045742	4'924.20
600	200	16	167,1	10045894	4'253.50	10039465	5'307.10
600	250	10	176,0	10052397	4'350.90	10052743	5'577.10
600	250	16	176,0	10037517	5'162.10	10039466	6'779.40
600	300	10	230,0	10046907	4'271.60	10039467	5'982.50
600	300	16	241,0	10037518	4'839.60	10039468	6'777.50
600	400	10	230,0	10052399	5'403.30	10045943	7'073.10
600	400	16	249,0	10044502	5'925.90	10039469	7'780.60
600	500	10	342,0	10052401	5'483.00	10039470	7'200.60
600	500	16	342,0	10037519	6'031.30	10039471	8'311.00
600	600	10	328,0	10052403	5'303.60	10045944	7'427.50
600	600	16	355,0	10044632	6'091.80	10039472	8'531.00

# FITTINGS

## BRS / TYTON

### VONROLL / DUKTUS MMB fitting

All socket tee with flanged branch

Version: BRS / longitudinally locked | without shear protection  
 TYTON not longitudinally locked | with TYTON EPDM gasket  
 Branch connection using TYTON push-fit sleeves

Standards: EN 545 | Company standard | EN 14 901 | GSK

Material: Ductile cast iron | Epoxy resin coating or full enamel



DN1	DN2	Version	PFA bar	Weight/unit kg	EPOXY		FULLY ENAMELLED	
					Part no.	Price/unit €	Part no.	Price/unit €
125	80	TYT/TYT	64	16,8	10051603	391.10	10039476	527.00
125	100	TYT/TYT	64	19,6	10047008	297.70	10039478	417.10
125	125	TYT/TYT	64	20,9	10047010	324.90	10039480	429.20
150	80	TYT/TYT	62	19,8	10047148	325.90	10045697	429.50
150	100	TYT/TYT	62	20,9	10047145	305.70	10045698	403.90
150	150	TYT/TYT	62	25,2	10047146	322.10	10045699	451.60
200	80	TYT/TYT	50	28,0	10050666	420.10	10045700	505.90
200	100	TYT/TYT	50	29,0	10050661	434.90	10045701	604.60
200	125	TYT/TYT	40	33,0	10046416	535.20	10039491	743.80
200	150	TYT/TYT	50	33,0	10047185	494.80	10045702	677.50
200	200	TYT/TYT	50	39,5	10047149	535.20	10045703	721.90
250	125	TYT/TYT	43	45,4	10046419	475.10	10039494	454.70
300	125	TYT/TYT	40	56,0	10046422	746.00	10039495	1'046.00

All prices include TYTON gaskets and, if required, a set of screws and a seal.

# FITTINGS

## BRS / TYTON

### VONROLL / DUKTUS MMR fitting

Double socket taper | PFA 64 bar

Version: BRS / longitudinally locked | without shear protection  
 TYTON not longitudinally locked | includes TYTON EPDM seal

Standards: EN 545 | Company standard | EN 14 901 | GSK

Material: Ductile cast iron | Epoxy resin coating or full enamel



#### EPOXY

DN1	DN2	Weight/unit kg	Part no.	Price/unit €
125	80	9,1	10047026	<b>223.90</b>
125	100	9,8	10046927	<b>202.40</b>
200	100	18,6	10047028	<b>282.80</b>
200	125	18,0	10050042	<b>374.20</b>
200	150	18,5	10047030	<b>312.70</b>

#### FULLY ENAMELLED

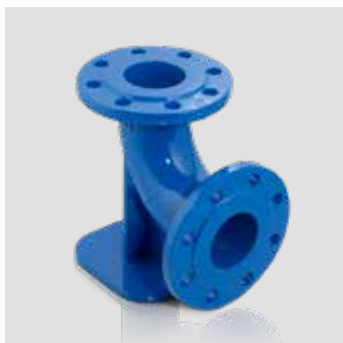
Part no.	Price/unit €
10039529	<b>305.70</b>
10039531	<b>280.80</b>
10039533	<b>397.10</b>
10039535	<b>502.80</b>
10039537	<b>426.30</b>

# FITTINGS

## FLANGE

### VONROLL / DUKTUS N fitting 90° double flanged duckfoot bend

Version: Flange joint  
 Standards: EN 545 | EN 1092-2 | Company standard | EN 14 901 | GSK  
 Material: Ductile cast iron | Epoxy resin coating or full enamel



#### EPOXY

DN	PN bar	Weight/unit kg	Part no.	Price/unit €
50	10/16	10,5	10040652	141.70
80	10/16	14,0	10048260	119.50
100	10/16	21,0	10048262	154.90
125	10/16	24,0	10040011	288.10
150	10/16	32,5	10047104	282.60
200	10	46,0	10047105	506.80
200	16	46,0	10047106	593.70
250	10	75,5	10050004	980.70
250	16	76,5	10049810	1'096.80
300	10	104,0	10047107	1'142.90
300	16	107,0	10047108	1'347.60
400	10	198,0	10047109	3'952.10
400	16	198,0	10047110	4'413.40
500	10	311,0	10047111	5'866.40
500	16	281,0	10046066	6'194.20
600	10	486,0	10052059	8'087.60
600	16	502,0	10042295	9'288.00

#### FULLY ENAMELLED

Part no.	Price/unit €
10039543	191.60
10045643	167.30
10045642	202.90
10039578	378.60
10045688	370.20
10039580	665.40
10039581	832.40
10039582	1'286.10
10039583	1'537.10
10039584	1'600.10
10039585	1'886.70
10039586	5'179.10
10039587	5'783.00
10039588	8'213.90
10039589	8'672.60
10039590	11'323.50
10039591	12'168.00

All prices exclude flange joint parts.

# FITTINGS

## FLANGE

### VONROLL / DUKTUS FFK fitting

#### Double flanged elbow

Version: Flange joint | Elbow 11¼° or 22½° or 30° or 45°  
 Standards: EN 545 | EN 1092-2 | Company standard | EN 14 901 | GSK  
 Material: Ductile cast iron | Epoxy resin coating or full enamel



DN	PN bar	Deflection [°]	Weight/unit kg	EPOXY		FULLY ENAMELLED	
				Part no.	Price/unit €	Part no.	Price/unit €
80	10/16	11	9,7	10048700	160.40	10045673	211.40
80	10/16	22	10,7	10049862	160.40	10045674	211.40
80	10/16	30	9,6	10048705	153.50	10045675	215.00
80	10/16	45	9,8	10048668	114.20	10045676	160.20
100	10/16	11	12,0	10048655	170.60	10045677	238.90
100	10/16	22	12,0	10048659	170.60	10045678	238.90
100	10/16	30	12,0	10048664	170.60	10045679	238.90
100	10/16	45	12,0	10047690	130.00	10045680	187.60
125	10/16	11	16,0	10040013	284.40	10039308	373.50
125	10/16	22	16,0	10040015	284.40	10039309	373.50
125	10/16	30	15,0	10046157	284.40	10039310	373.50
125	10/16	45	15,0	10046158	206.60	10039311	290.10
150	10/16	11	19,5	10048702	281.50	10045681	394.20
150	10/16	22	19,5	10048704	281.50	10045682	394.20
150	10/16	30	20,0	10048665	283.20	10045683	397.50
150	10/16	45	19,5	10048671	204.70	10045684	279.70
200	10	11	26,0	10048698	465.70	10045685	653.30
200	16	11	26,0	10051461	542.40	10039312	761.00
200	10	22	29,0	10048701	472.50	10045686	661.90
200	16	22	29,0	10045540	565.20	10039313	740.30
200	10	30	28,5	10048666	537.40	10045687	748.60
200	16	30	28,5	10051355	581.30	10039314	762.50
200	10	45	29,0	10047697	349.60	10045586	489.60
200	16	45	29,0	10051142	402.60	10039315	564.70

All prices exclude flange joint parts.

# FITTINGS

## FLANGE

### VONROLL / DUKTUS FFK fitting

Double flanged elbow

Version: Flange joint | Elbow 11¼° or 22½° or 30° or 45°  
 Standards: EN 545 | EN 1092-2 | Company standard | EN 14 901 | GSK  
 Material: Ductile cast iron | Epoxy resin coating or full enamel



DN	PN bar	Deflection [°]	Weight/unit kg	EPOXY		FULLY ENAMELLED	
				Part no.	Price/unit €	Part no.	Price/unit €
250	10	11	44,3	10051148	796.60	10039316	1'044.00
250	16	11	44,5	10045541	876.30	10039317	1'095.20
250	10	22	44,5	10049884	718.20	10039318	941.60
250	16	22	44,5	10051693	781.30	10039319	1'095.20
250	10	30	44,6	10048995	714.50	10039320	936.40
250	16	30	42,5	10049217	781.30	10039321	1'095.20
250	10	45	52,5	10048674	576.60	10039322	808.40
250	16	45	54,0	10045542	718.20	10039323	1'006.40
300	10	11	60,0	10048699	1'035.50	10045936	1'358.00
300	16	11	63,5	10050576	1'223.20	10039324	1'603.40
300	10	22	65,0	10048703	980.80	10045937	1'373.30
300	16	22	67,0	10050575	1'223.20	10039325	1'603.40
300	10	30	68,0	10050254	1'006.30	10045938	1'318.70
300	16	30	69,0	10050574	1'223.20	10039326	1'603.40
300	10	45	75,0	10048541	791.30	10045736	1'108.90
300	16	45	79,0	10052567	886.90	10039327	1'241.90
400	10	11	58,0	10051447	1'345.30	10039328	1'763.70
400	16	11	67,0	10045545	1'606.20	10039329	2'105.00
400	10	22	65,0	10048663	1'447.30	10039330	2'018.00
400	16	22	72,0	10045544	1'709.20	10039331	2'341.40
400	10	30	72,0	10050654	1'492.90	10039332	1'956.50
400	16	30	81,0	10045543	1'717.30	10039333	2'250.10
400	10	45	94,0	10050653	1'414.20	10039334	1'980.60
400	16	45	118,0	10045416	1'731.70	10039335	2'268.80
500	10	11	103,0	10051352	2'154.70	10039336	2'823.20
500	16	11	112,0	10045417	2'572.30	10039337	3'370.90
500	10	22	118,0	10052345	2'452.20	10039338	3'333.80
500	16	22	125,0	10045418	2'858.40	10039339	3'746.30
500	10	30	128,0	10051351	2'824.70	10039340	3'887.70
500	16	30	138,0	10040784	3'144.60	10039341	4'119.70
500	10	45	169,0	10049834	2'676.50	10039342	3'747.80
500	16	45	186,0	10052065	3'218.90	10039343	4'506.90
600	10	11	160,0	10051021	5'000.40	10039344	6'552.30
600	16	11	170,0	10046413	5'831.60	10039345	7'640.70
600	10	22	174,5	10052314	5'000.40	10039346	6'552.30
600	16	22	225,0	10044099	5'831.60	10039347	7'640.70
600	10	30	213,0	10052316	4'860.00	10039348	6'368.00
600	16	30	225,0	10040081	5'457.00	10039349	7'640.70
600	10	45	251,0	10051602	5'155.30	10039350	6'755.30
600	16	45	301,0	10042992	5'702.20	10039351	7'471.80
800	10	11	428,0	10052319	6'194.50	10039352	8'116.70
800	16	11	366,0	10037525	7'122.20	10039353	9'331.30
800	10	30	428,0	10051266	7'689.30	10039354	10'074.90
800	16	30	430,0	10040252	8'841.30	10039355	11'582.90
800	10	45	428,0	10051306	8'222.00	10039356	11'510.60
800	16	45	430,0	10040253	9'693.50	10039357	13'570.80

All prices exclude flange joint parts.

# FITTINGS

## FLANGE

### VONROLL / DUKTUS Q fitting 90° double flanged elbow

Version: Flange joint  
 Standards: EN 545 | EN 1092-2 | Company standard | EN 14 901 | GSK  
 Material: Ductile cast iron | Epoxy resin coating or full enamel



#### EPOXY

DN	PN bar	Weight/unit kg	Part no.	Price/unit €
50	10/16	6,7	10040655	104.10
80	10/16	9,9	10047726	119.50
100	10/16	12,5	10047418	133.20
125	10/16	16,0	10046159	187.60
150	10/16	21,0	10047419	218.40
200	10	31,5	10047420	343.00
200	16	32,0	10047421	426.40
250	10	49,0	10047423	585.20
250	16	52,0	10047422	646.40
300	10	69,0	10047389	703.70
300	16	72,0	10047391	849.60
400	10	126,0	10047397	2'280.70
400	16	137,0	10047399	2'787.30
500	10	180,0	10047405	3'872.30
500	16	204,0	10047407	4'445.50
600	10	269,0	10049055	6'157.90
600	16	322,0	10044134	7'388.50
800	10	527,0	10051408	9'484.80
800	16	547,0	10037014	10'904.90

#### FULLY ENAMELLED

Part no.	Price/unit €
10039592	146.70
10045689	167.30
10045640	187.60
10037560	262.70
10045639	307.00
10045638	481.00
10039594	597.00
10039595	767.70
10039596	906.00
10045854	923.00
10039597	1'190.70
10039598	3'193.40
10039599	3'903.10
10039600	5'421.40
10039601	6'224.80
10039602	8'068.90
10039603	9'680.80
10039604	12'427.20
10039605	14'286.80

Note that all prices exclude flange joint parts.

# FITTINGS

## FLANGE

### VONROLL / DUKTUS FFR fitting

Double flanged taper

Version: Flange joint  
 Standards: EN 545 | EN 1092-2 | Company standard | EN 14 901 | GSK  
 Material: Ductile cast iron | Epoxy resin coating or full enamel



EPOXY							FULLY ENAMELLED	
DN1	DN2	PN bar	Installation length mm	Weight/unit kg	Part no.	Price/unit €	Part no.	Price/unit €
80	50	10/16	200	7,5	10045070	87.10	10045587	122.80
80	65	10/16	200	8,8	10046164	117.70	10037038	165.60
100	50	10/16	200	8,5	10047733	87.10	10039358	122.80
100	65	10/16	200	9,5	10040034	111.20	10039359	146.70
100	80	10/16	200	9,6	10047737	104.10	10045588	146.70
125	80	10/16	200	11,5	10046125	122.10	10037645	160.20
125	100	10/16	200	12,5	10046129	116.00	10039360	163.80
150	80	10/16	200	12,5	10047743	128.00	10045589	179.10
150	100	10/16	200	14,0	10048736	129.60	10045590	182.50
150	125	10/16	200	13,5	10048740	143.30	10042354	201.30
200	80	10	300	17,5	10048696	202.40	10045591	266.20
200	80	16	300	17,5	10051233	250.20	10037265	350.30
200	100	10	300	20,0	10048529	213.50	10045592	298.90
200	100	16	300	20,0	10051083	234.90	10040966	327.60
200	125	10	300	21,0	10048697	242.20	10042466	339.30
200	125	16	300	21,0	10050326	310.30	10042474	434.50
200	150	10	300	23,0	10048742	196.20	10045593	274.70
200	150	16	300	23,0	10051040	240.60	10039362	337.90
250	80	10	300	27,0	10040182	322.40	10039363	452.00
250	80	16	300	27,0	10040183	377.10	10039364	528.80
250	100	10	300	28,0	10040186	319.00	10039365	417.90
250	100	16	300	28,0	10040187	371.90	10037441	522.10
250	150	10	300	28,0	10049059	305.30	10039366	428.20
250	150	16	300	28,0	10051998	363.40	10039367	510.00
250	200	10	300	28,5	10047499	310.50	10045737	434.90
250	200	16	300	31,0	10051421	377.10	10039368	528.80
300	100	10	300	35,0	10040366	373.50	10039369	523.70
300	100	16	300	36,0	10040970	448.60	10039370	629.30
300	150	10	300	39,0	10043968	391.80	10039371	513.60
300	150	16	300	41,5	10044163	448.60	10039372	629.30
300	200	10	300	39,0	10045041	366.80	10045594	513.60
300	200	16	300	44,0	10045043	441.80	10039373	619.30
300	250	10	300	43,5	10045046	377.10	10045595	528.80
300	250	16	300	45,5	10050608	467.40	10045738	654.90

All prices exclude flange joint parts.

# FITTINGS

## FLANGE

### VONROLL / DUKTUS FFR fitting

Double flanged taper

Version: Flange joint  
 Standards: EN 545 | EN 1092-2 | Company standard | EN 14 901 | GSK  
 Material: Ductile cast iron | Epoxy resin coating or full enamel



DN1	DN2	PN bar	Installation length mm	Weight/unit kg	EPOXY		FULLY ENAMELLED	
					Part no.	Price/unit €	Part no.	Price/unit €
400	200	10	300	60,0	10042230	892.30	10039374	1'250.40
400	250	10	300	52,0	10051446	909.30	10039375	1'322.10
400	300	10	300	56,5	10045054	827.40	10039376	1'274.30
400	200	16	300	57,0	10036799	943.40	10039377	1'359.50
400	250	16	300	57,0	10051344	970.70	10045739	1'158.20
400	300	16	300	67,0	10050761	1'051.00	10039378	1'472.20
500	300	10	600	110,0	10040644	1'975.60	10039379	2'766.90
500	400	10	600	128,5	10040648	2'070.80	10039380	3'121.80
500	300	16	600	126,5	10042234	2'382.60	10039381	2'899.90
500	400	16	600	145,0	10042226	2'490.30	10039382	3'263.50
600	400	10	600	156,0	10045063	3'036.20	10039383	4'250.50
600	400	16	600	170,0	10040080	3'422.10	10039384	4'791.00

All prices exclude flange joint parts.

# FITTINGS

## FLANGE

### VONROLL / DUKTUS T fitting

All flanged tee

Version: Flange joint  
 Standards: EN 545 | EN 1092-2 | Company standard | EN 14 901 | GSK  
 Material: Ductile cast iron | Epoxy resin coating or full enamel



EPOXY							FULLY ENAMELLED	
DN1	DN2	PN bar	Weight/unit kg	Part no.	Price/unit €	Part no.	Price/unit €	
50	50	10/16	10,5	10048680	131.30	10039606	172.30	
80	50	10/16	14,5	10047769	153.20	10039607	214.40	
80	65	10/16	16,0	10040422	194.10	10039608	255.20	
80	80	10/16	17,0	10047773	141.70	10045617	199.50	
100	50	10/16	17,0	10050193	166.00	10039609	218.40	
100	65	10/16	19,0	10040426	185.80	10039610	244.00	
100	80	10/16	19,0	10047468	150.20	10045618	211.40	
100	100	10/16	20,0	10047467	153.50	10045619	215.00	
125	80	10/16	22,0	10047471	204.30	10039157	267.80	
125	100	10/16	23,5	10047469	220.50	10039611	290.10	
125	125	10/16	25,0	10047470	233.30	10042465	307.00	
150	50	10/16	30,0	10040413	275.30	10039612	361.60	
150	80	10/16	29,5	10047776	232.10	10045620	325.90	
150	100	10/16	30,0	10047472	237.00	10045621	332.50	
150	125	10/16	32,5	10048692	289.80	10039613	380.40	
150	150	10/16	34,0	10047473	244.00	10045622	343.00	
200	80	10	42,5	10047780	380.90	10045623	499.80	
200	80	16	42,0	10048760	444.20	10040724	622.00	
200	100	10	42,5	10047785	382.70	10045624	501.50	
200	100	16	45,0	10050609	432.10	10040725	566.20	
200	125	10	51,0	10040418	477.30	10042353	663.60	
200	125	16	51,0	10041555	524.90	10042357	673.90	
200	150	10	46,5	10047788	397.50	10045625	522.10	
200	150	16	48,0	10050593	446.70	10040726	585.20	
200	200	10	49,5	10047792	408.30	10045626	535.70	
200	200	16	51,0	10050087	450.30	10042464	590.20	

Note that all prices exclude flange joint parts.

# FITTINGS

## FLANGE

### VONROLL / DUKTUS T fitting

All flanged tee

Version: Flange joint  
 Standards: EN 545 | EN 1092-2 | Company standard | EN 14 901 | GSK  
 Material: Ductile cast iron | Epoxy resin coating or full enamel



EPOXY						FULLY ENAMELLED	
DN1	DN2	PN bar	Weight/unit kg	Part no.	Price/unit €	Part no.	Price/unit €
250	80	10	68,0	10047797	650.80	10040904	853.00
250	80	16	72,0	10050607	842.40	10037439	1'179.30
250	100	10	67,0	10048693	692.30	10040901	969.30
250	100	16	71,0	10050424	834.60	10037374	1'168.50
250	150	10	81,0	10047803	738.50	10040900	1'034.00
250	150	16	82,0	10051559	888.60	10039615	1'244.10
250	200	10	76,5	10048487	800.30	10044085	1'120.40
250	200	16	78,5	10051560	919.40	10039616	1'287.20
250	250	10	82,5	10047808	762.00	10044084	999.70
250	250	16	84,5	10049811	896.40	10039617	1'254.80
300	80	10	96,5	10047811	785.80	10046632	1'100.00
300	80	16	98,0	10051065	980.80	10039618	1'373.30
300	100	10	94,5	10048558	793.00	10045627	1'038.80
300	100	16	98,0	10051561	885.20	10039620	1'240.20
300	150	10	103,0	10048387	853.20	10039621	1'119.10
300	150	16	104,0	10051247	1'052.10	10039622	1'432.80
300	200	10	107,0	10047817	864.00	10045748	1'132.70
300	200	16	107,0	10051038	1'022.70	10039624	1'340.90
300	250	10	112,0	10050050	1'162.90	10038951	1'628.00
300	250	16	114,0	10051550	1'204.80	10039626	1'790.80
300	300	10	117,0	10047819	935.10	10045749	1'309.30
300	300	16	119,0	10049077	1'188.70	10039627	1'664.20
400	80	10	141,0	10048639	2'074.60	10037247	2'719.10
400	80	16	143,0	10051905	2'435.70	10039629	3'191.80
400	100	10	143,5	10048779	2'207.90	10039631	3'091.10
400	100	16	146,0	10052086	2'521.60	10039633	3'530.30
400	150	10	150,0	10047823	2'027.10	10039635	2'655.90
400	150	16	153,0	10051907	2'413.50	10039637	3'162.70
400	200	10	155,0	10049895	2'120.10	10039640	2'778.80
400	200	16	160,0	10050318	2'430.10	10039641	3'184.90
400	300	10	175,0	10049807	3'031.10	10039649	4'243.80
400	300	16	180,0	10052085	3'400.30	10039661	4'760.50
400	400	10	180,0	10047828	2'772.10	10037294	3'880.80
400	400	16	195,0	10051370	3'186.70	10039663	4'462.70

Note that all prices exclude flange joint parts.

# FITTINGS

## FLANGE

### VONROLL / DUKTUS T fitting

All flanged tee

Version: Flange joint  
 Standards: EN 545 | EN 1092-2 | Company standard | EN 14 901 | GSK  
 Material: Ductile cast iron | Epoxy resin coating or full enamel



EPOXY						FULLY ENAMELLED	
DN1	DN2	PN bar	Weight/unit kg	Part no.	Price/unit €	Part no.	Price/unit €
500	80	10	200,0	10052056	3'027.90	10039665	4'239.20
500	80	16	203,0	10042877	3'780.30	10039667	5'293.40
500	100	10	210,0	10051959	3'697.90	10039669	5'133.30
500	100	16	240,0	10051453	4'706.80	10052744	6'589.60
500	150	10	216,0	10048501	3'641.30	10052745	5'054.50
500	150	16	245,0	10045994	4'475.40	10052746	6'265.50
500	200	10	224,0	10048781	3'867.90	10039619	5'415.00
500	200	16	235,0	10051454	4'437.00	10037266	5'813.80
500	250	10	225,0	10052474	4'774.60	10039623	6'685.30
500	250	16	240,0	10046590	4'632.20	10039625	6'069.50
500	300	10	231,0	10048784	4'212.90	10039628	5'520.30
500	300	16	245,0	10046067	4'841.90	10039630	6'344.00
500	500	10	340,0	10049089	4'948.70	10039632	6'619.70
500	500	16	350,0	10043616	5'142.50	10039634	6'738.10
600	100	10	334,0	10051304	5'846.20	10039636	7'659.40
600	100	16	354,0	10051902	6'670.10	10039638	8'739.30
600	150	10	320,0	10048712	5'817.00	10039643	7'621.90
600	150	16	356,0	10051903	7'109.60	10039645	9'314.20
600	200	10	330,0	10050600	6'086.80	10039647	7'975.00
600	200	16	377,5	10045398	7'109.60	10039651	9'314.20
600	250	10	335,0	10052480	6'458.70	10039653	8'463.00
600	250	16	402,5	10040108	7'475.90	10039655	9'795.10
600	300	10	360,0	10048790	6'152.50	10039657	8'613.50
600	300	16	466,0	10044135	7'271.50	10039659	9'527.30
600	400	10	370,0	10052483	6'045.10	10039671	8'463.10
600	400	16	407,0	10040535	7'204.30	10039673	10'085.80
600	500	10	389,5	10048792	5'247.80	10039675	7'346.90
600	500	16	429,0	10040931	7'708.70	10039677	10'792.10
600	600	10	439,0	10048793	7'166.20	10039679	10'032.70
600	600	16	530,0	10043953	8'291.50	10039681	11'558.70

Note that all prices exclude flange joint parts.

# FITTINGS

## FLANGE

### VONROLL / DUKTUS T fitting

All flanged tee

Version: Flange joint  
 Standards: EN 545 | EN 1092-2 | Company standard | EN 14 901 | GSK  
 Material: Ductile cast iron | Epoxy resin coating or full enamel



#### EPOXY

#### FULLY ENAMELLED

DN1	DN2	PN bar	Weight/unit kg	Part no.	Price/unit €	Part no.	Price/unit €
800	100	10	392,0	10051528	10'879.30	10039682	14'254.30
800	100	16	420,0	10043790	12'224.80	10039684	16'016.40
800	150	10	389,0	10052488	9'534.10	10039686	13'348.60
800	150	16	397,0	10040666	11'439.70	10039688	16'016.40
800	200	10	400,0	10051409	10'385.40	10039690	13'606.20
800	200	16	400,0	10041738	12'224.80	10039692	16'016.40
800	250	10	410,0	10052515	9'940.10	10039694	13'916.70
800	250	16	410,0	10038146	11'954.90	10039696	16'737.90
800	300	10	420,0	10052516	11'446.30	10039698	14'996.50
800	300	16	440,0	10043791	12'775.30	10039700	16'737.90
800	400	10	461,0	10052491	11'136.40	10039702	14'590.40
800	400	16	485,0	10037527	12'775.30	10039703	16'737.90
800	500	10	647,0	10052492	11'730.70	10039705	15'368.30
800	500	16	699,0	10043680	13'562.70	10039707	17'768.40
800	600	10	730,0	10052493	10'695.20	10039709	15'797.90
800	600	16	765,0	10045480	13'562.70	10039711	17'768.40
800	800	10	780,0	10050597	11'869.30	10039713	15'550.90
800	800	16	800,0	10040665	14'452.30	10039715	18'935.30
1000	150	10	540,0	10041598	13'834.60		
1000	150	16	615,0	10041599	16'603.30		
1000	200	10	545,0	10041604	14'107.50		
1000	200	16	620,0	10041605	16'929.10		
1000	250	10	548,0	10041610	14'107.50		
1000	250	16	635,0	10041611	16'929.10		
1000	300	10	556,0	10041616	15'451.80		
1000	300	16	660,0	10041617	18'537.80		
1000	400	10	852,0	10052502	15'915.90		
1000	400	16	852,0	10041622	18'544.70		
1000	500	10	930,0	10052503	16'175.00		
1000	500	16	1'395,0	10037528	19'418.00		
1000	600	10	1'100,0	10052504	16'173.50		
1000	600	16	1'175,0	10041624	19'416.30		
1000	800	10	1'147,0	10052505	16'473.60		
1000	800	16	1'147,0	10041625	19'965.60		
1000	1000	10	1'340,0	10052506	18'087.50		
1000	1000	16	1'365,0	10041626	21'709.00		

Note that all prices exclude flange joint parts.

# FITTINGS

## FLANGE

### VONROLL / DUKTUS TT fitting

All flanged cross

Version: Flange joint  
 Standards: Company standard | EN 1092-2 | Company standard | EN 14 901 | GSK  
 Material: Ductile cast iron | Epoxy resin coating or full enamel



				EPOXY		FULLY ENAMELLED	
DN1	DN2	PN bar	Weight/unit kg	Part no.	Price/unit €	Part no.	Price/unit €
80	80	10/16	20,5	10048695	333.70	10036997	438.30
100	100	10/16	23,5	10050013	359.10	10037423	535.50
125	125	10/16	35,0	10046166	615.00	10039164	853.90
150	150	10/16	38,0	10048629	755.90	10041206	1'058.20
200	200	10	58,0	10050606	973.40	10039717	1'362.70
200	200	16	60,6	10051159	1'217.60	10039719	1'704.70
300	300	10	167,0	10051226	3'263.10	10039721	4'275.00
300	300	16	170,0	10042794	5'174.00	10039723	7'244.70
400	400	10	239,0	10052001	4'759.40	10039725	6'663.10
400	400	16	241,0	10051972	6'969.90	10039727	9'444.50

Note that all prices exclude flange joint parts.

# FITTINGS

## FLANGE

### VONROLL / DUKTUS X fitting

#### Blind flange

Version: Flange joint  
 Standards: EN 545 | EN 1092-2 | Company standard | EN 14 901 | GSK  
 Material: Ductile cast iron | Epoxy resin coating or full enamel



#### EPOXY

DN	PN bar	Weight/unit kg	Part no.	Price/unit €
40	10/16	1,9	10048488	35.70
65	10/16	3,2	10048568	44.40
80	10/16	4,0	10048522	40.90
100	10/16	4,4	10048519	44.40
125	10/16	5,6	10049768	61.50
150	10/16	7,3	10048571	88.70
200	10	12,0	10048593	117.70
200	16	11,5	10051076	124.50
250	10	17,5	10048594	180.80
250	16	16,5	10049812	215.00
300	10	23,0	10048598	238.00
300	16	22,0	10051248	291.80
350	10	34,0	10036795	525.40
350	16	34,0	10037478	598.70
400	10	42,0	10048599	554.40
400	16	49,0	10051325	839.10
500	10	68,0	10050698	731.70
500	16	68,0	10045792	866.70
600	10	97,0	10051302	1'063.60
600	16	97,0	10036984	1'416.30
700	10	175,0	10051721	2'579.10
800	10	227,0	10050599	2'818.10
900	10	273,0	10052145	3'258.20
1000	10	453,0	10052143	4'808.90

#### FULLY ENAMELLED

Part no.	Price/unit €
10044587	51.10
10045633	63.20
10045754	57.80
10045634	63.20
10044588	87.10
10045635	124.50
10045636	165.60
10042310	175.70
10045962	254.10
10037936	301.90
10045637	343.00
10037937	409.30
10036794	737.10
10037515	839.10
10045753	776.10
10037938	1'175.30
10045963	1'025.30
10037939	1'214.60
10045964	1'489.00
10037940	1'982.60
10044589	3'610.80
10044590	3'945.60
10044591	4'561.50
10044592	6'733.10

Note that all prices exclude flange joint parts. Surcharge for threaded holes.  
 Fittings for higher pressure levels available on request.

# FITTINGS

## FLANGE

### VONROLL / DUKTUS XR fitting

#### Reducing flange

Version: Flange joint  
 Standards: Company standard | EN 1092-2 | EN 14 901 | GSK  
 Material: Ductile cast iron | Epoxy resin coating | Galvanised or stainless steel bolts



#### GALVANISED BOLTS

DN1	DN2	PN bar	Version	Weight/unit kg	Part no.	Price/unit €
80	50	10/16	4/4	6,0	10052436	117.70
80	50	10/16	8/4	6,8	10052443	128.00
80	65	10/16	8/4	6,0	10052444	136.40
80	80	10/16	4/8	5,8	10049886	141.70
100	50	10/16	8/4	6,5	10042291	145.00
100	65	10/16	8/4	7,0	10052445	143.30
100	80	10/16	4/8	8,0	10052446	162.00
100	80	10/16	8/4	8,0	10052447	145.00
100	80	10/16	8/8	9,8	10049859	185.80
100	100	10/16	4/8	8,0	10052448	150.20
125	100	10/16	8/4	8,0	10052449	174.10
125	100	10/16	4/8	8,0	10052451	174.10
125	100	10/16	8/8	9,8	10050517	199.50
150	80	10/16	8/4	11,0	10052452	198.00
150	80	10/16	8/8	11,0	10048797	221.90
150	100	10/16	8/8	13,0	10049251	233.60
150	125	10/16	8/8	9,6	10042293	343.00

#### STAINLESS STEEL BOLTS

Part no.	Price/unit €
10052519	162.00
10052520	177.30
10052521	191.10
10052522	199.50
10042292	202.90
10052523	202.90
10052524	202.90
10052525	202.90
10052526	242.20
10052527	202.90
10052528	242.20
10052530	242.20
10052531	269.70
10052532	273.00
10052533	310.50
10052534	336.10
10042294	464.10

Note that all prices exclude flange joint parts.

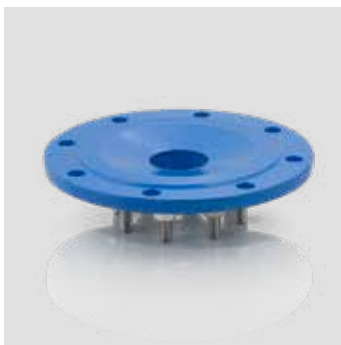
# FITTINGS

## FLANGE

### VONROLL / DUKTUS XR fitting

#### Reducing flange

Version: Flange joint  
 Standards: Company standard | EN 1092-2 | EN 14 901 | GSK  
 Material: Ductile cast iron | Epoxy resin coating | Galvanised or stainless steel bolts



#### GALVANISED BOLTS

DN1	DN2	PN bar	Version	Weight/unit kg	Part no.	Price/unit €
200	80	10	8/4	17,0	10040678	250.70
200	80	10	8/8	17,0	10040657	356.40
200	80	16	12/8	17,0	10040680	325.90
200	100	10	8/4	15,0	10046219	325.90
200	100	10	8/8	15,0	10046038	286.70
200	100	16	12/8	15,0	10046039	322.40
200	150	10	8/8	18,0	10052589	341.10
200	150	16	12/8	18,0	10044242	363.40
200	200	16	12/8	11,2	10042298	506.60
250	80	10	12/8	20,0	10052140	532.20
250	80	16	12/8	23,0	10042299	530.70
250	150	10	12/8	20,5	10052457	607.20
250	150	16	12/8	19,0	10042301	661.90
250	200	10	12/8	31,4	10049293	622.60
250	200	16	12/12	31,4	10040659	721.70
300	250	10	12/12	64,0	10049851	846.20
350	300	10	16/12	33,0	10050111	931.60
400	80	10	16/8	48,0	10037493	1'634.30
400	80	16	16/8	56,0	10037494	1'859.50
400	350	10	16/16	85,0	10050342	1'985.60

#### STAINLESS STEEL BOLTS

Part no.	Price/unit €
10040679	344.60
10040658	395.70
10040681	455.50
10046220	455.50
10046221	395.70
10046222	455.50
10043225	448.60
10052590	518.40
10042296	684.10
10052535	747.20
10042300	747.20
10052536	851.20
10042302	878.40
10052537	880.20
10040660	1'129.20
10052538	1'185.50
10052539	1'258.90
10037491	2'198.80
10037492	2'547.10
10052540	2'971.60

Note that all prices exclude flange joint parts.

# FITTINGS

## FLANGE

### VONROLL / DUKTUS FF fitting

#### Flanged pipes

Version: Flange joint  
 Standards: EN 545 | EN 1092-2 | Company standard | EN 14 901 | GSK  
 Material: Ductile cast iron | Epoxy resin coating or full enamel



EPOXY						FULLY ENAMELLED	
DN	PN bar	Installation length mm	Weight/unit kg	Part no.	Price/unit €	Part no.	Price/unit €
50	10/16	100	5,5	10040609	<b>107.40</b>	10039214	<b>141.70</b>
50	10/16	200	6,2	10040612	<b>98.90</b>	10039215	<b>139.80</b>
50	10/16	300	7,1	10040615	<b>110.70</b>	10039216	<b>154.80</b>
50	10/16	400	8,8	10040618	<b>122.80</b>	10039217	<b>218.10</b>
50	10/16	500	9,9	10040621	<b>137.70</b>	10039218	<b>192.80</b>
80	10/16	100	7,5	10048681	<b>85.70</b>	10045646	<b>119.90</b>
80	10/16	150	8,4	10047495	<b>83.40</b>	10045647	<b>117.70</b>
80	10/16	200	8,9	10048806	<b>85.40</b>	10045648	<b>119.50</b>
80	10/16	250	10,0	10047496	<b>104.10</b>	10042617	<b>146.70</b>
80	10/16	300	11,0	10049292	<b>102.40</b>	10045585	<b>143.30</b>
80	10/16	400	12,5	10047851	<b>125.80</b>	10045649	<b>165.60</b>
80	10/16	500	13,5	10047855	<b>125.80</b>	10045650	<b>165.60</b>
80	10/16	600	16,0	10047858	<b>231.50</b>	10039222	<b>303.70</b>
80	10/16	700	17,8	10048948	<b>240.60</b>	10039227	<b>315.60</b>
80	10/16	800	18,5	10048117	<b>251.70</b>	10040404	<b>330.90</b>
80	10/16	1000	22,0	10048121	<b>297.20</b>	10037577	<b>390.70</b>

All prices exclude flange joint parts.

# FITTINGS

## FLANGE

### VONROLL / DUKTUS FF fitting

Flanged pipes

Version: Flange joint  
 Standards: EN 545 | EN 1092-2 | Company standard | EN 14 901 | GSK  
 Material: Ductile cast iron | Epoxy resin coating or full enamel



#### EPOXY

#### FULLY ENAMELLED

DN	PN bar	Installation length mm	Weight/unit kg	Part no.	Price/unit €	Part no.	Price/unit €
100	10/16	100	8,8	10048124	93.90	10045651	131.30
100	10/16	150	9,9	10048690	100.20	10045652	131.30
100	10/16	200	11,0	10048128	93.90	10045653	131.30
100	10/16	250	11,5	10047720	124.00	10040760	163.80
100	10/16	300	13,5	10048952	112.70	10045733	158.80
100	10/16	400	15,0	10048135	143.30	10037440	201.30
100	10/16	500	17,0	10048139	145.00	10045654	202.90
100	10/16	600	19,5	10048682	242.20	10041734	339.30
100	10/16	700	21,5	10048954	257.20	10039232	337.90
100	10/16	800	24,0	10048714	252.50	10039238	354.90
100	10/16	1000	27,5	10048957	280.70	10045655	368.60
125	10/16	100	10,6	10048683	162.20	10039241	213.40
125	10/16	150	10,0	10048707	173.20	10039244	226.90
125	10/16	200	13,5	10048312	160.20	10039247	225.10
125	10/16	250	14,6	10048508	178.80	10039250	235.40
125	10/16	300	15,2	10048958	163.80	10039219	230.40
125	10/16	400	17,6	10048684	237.00	10039220	310.50
125	10/16	500	21,6	10048960	226.90	10039221	319.00
125	10/16	600	23,3	10048685	393.80	10039223	551.20
125	10/16	700	24,0	10048163	506.60	10039224	758.40
125	10/16	800	29,0	10047500	441.20	10039225	578.30
125	10/16	1000	32,0	10048686	576.10	10039226	806.40

All prices exclude flange joint parts.

# FITTINGS

## FLANGE

### VONROLL / DUKTUS FF fitting

#### Flanged pipes

Version: Flange joint  
 Standards: EN 545 | EN 1092-2 | Company standard | EN 14 901 | GSK  
 Material: Ductile cast iron | Epoxy resin coating or full enamel



#### EPOXY

DN	PN bar	Installation length mm	Weight/unit kg	Part no.	Price/unit €
150	10/16	100	13,6	10048962	154.90
150	10/16	150	15,0	10047543	156.90
150	10/16	200	16,0	10048173	154.90
150	10/16	250	18,2	10048222	179.10
150	10/16	300	18,5	10048177	185.80
150	10/16	400	21,5	10048181	215.20
150	10/16	500	24,5	10048967	242.50
150	10/16	600	29,6	10048688	339.00
150	10/16	700	32,5	10048189	373.80
150	10/16	800	36,0	10048460	377.30
150	10/16	1000	42,5	10047524	550.20
150	10/16	1100	45,7	10052174	1'449.90
150	10/16	1200	48,7	10051411	1'509.70
150	10/16	1300	51,9	10052173	1'598.40
150	10/16	1400	61,6	10052172	1'654.80
150	10/16	1500	61,6	10049802	1'702.60
150	10/16	1600	64,6	10048800	1'765.60

#### FULLY ENAMELLED

Part no.	Price/unit €
10045656	202.90
10045755	206.60
10045657	202.90
10044660	250.70
10045734	244.00
10039228	283.20
10045658	339.60
10039229	445.30
10039230	489.60
10039231	494.70
10045659	770.30

All prices exclude flange joint parts.

# FITTINGS

## FLANGE

### VONROLL / DUKTUS FF fitting

#### Flanged pipes

Version: Flange joint  
 Standards: EN 545 | EN 1092-2 | Company standard | EN 14 901 | GSK  
 Material: Ductile cast iron | Epoxy resin coating or full enamel



#### EPOXY

#### FULLY ENAMELLED

DN	PN bar	Installation length mm	Weight/unit kg	Part no.	Price/unit €	Part no.	Price/unit €
200	10	100	18,7	10048971	304.20	10039233	425.80
200	16	100	18,9	10051679	334.60	10039234	468.40
200	10	150	21,5	10048493	219.30	10045660	307.00
200	16	150	21,5	10045775	280.40	10039235	392.70
200	10	200	30,0	10048974	202.40	10045661	283.40
200	16	200	23,3	10051232	233.30	10039236	307.00
200	10	250	26,5	10048495	264.30	10039237	346.40
200	16	250	26,5	10046267	290.70	10039239	380.90
200	10	300	30,0	10048976	244.30	10045735	342.00
200	16	300	30,0	10048977	259.20	10039240	363.40
200	10	400	34,0	10048978	289.80	10039971	405.80
200	16	400	32,8	10051717	356.80	10039242	499.70
200	10	500	38,5	10048213	308.00	10045662	404.20
200	16	500	38,4	10051245	359.10	10039243	471.00
200	10	600	41,5	10048979	455.80	10039245	597.00
200	16	600	41,5	10050525	525.40	10039246	737.10
200	10	700	46,0	10048981	606.40	10039248	848.90
200	16	700	46,0	10051716	683.60	10039249	895.50
200	10	800	50,5	10048982	535.80	10039251	750.20
200	16	800	50,5	10049921	683.60	10039252	895.50
200	10	1000	60,5	10048985	692.60	10045663	873.00
200	16	1000	63,0	10051039	756.60	10039253	1'059.20
200	10	1100	64,3	10052247	1'825.30		
200	16	1100	64,3	10043495	2'009.60		
200	10	1200	68,0	10049865	1'864.60		
200	16	1200	68,0	10041340	2'210.50		
200	10	1300	73,5	10049800	1'898.70		
200	16	1300	73,5	10038028	2'087.80		
200	10	1400	83,2	10052182	1'965.10		
200	16	1400	83,2	10038029	2'296.50		
200	10	1500	82,8	10050526	2'077.80		
200	16	1500	82,8	10043350	2'285.90		
200	10	1600	93,0	10052181	2'111.90		
200	16	1600	93,0	10040083	2'325.10		

All prices exclude flange joint parts.

# FITTINGS

## FLANGE

### VONROLL / DUKTUS FF fitting

Flanged pipes

Version: Flange joint  
 Standards: EN 545 | EN 1092-2 | Company standard | EN 14 901 | GSK  
 Material: Ductile cast iron | Epoxy resin coating or full enamel



#### EPOXY

#### FULLY ENAMELLED

DN	PN bar	Installation length mm	Weight/unit kg	Part no.	Price/unit €	Part no.	Price/unit €
250	10	100	24,6	10040624	368.30	10039254	566.50
250	16	100	24,6	10042215	404.60	10039255	623.10
250	10	200	33,0	10037506	325.90	10039256	457.20
250	16	200	33,0	10037507	373.50	10039257	523.70
250	10	300	42,0	10040358	364.60	10039258	510.50
250	16	300	42,0	10041171	401.10	10039259	561.50
250	10	400	43,0	10037510	482.70	10039260	677.20
250	16	400	43,0	10037511	540.80	10039261	757.30
250	10	500	51,0	10040362	496.50	10039262	696.10
250	16	500	51,0	10040959	585.20	10039263	820.60
250	10	800	62,5	10050169	832.40	10039264	1'166.80
250	16	800	62,5	10045996	1'072.90	10039265	1'503.00
250	10	1000	71,0	10049757	737.10	10039266	1'032.00
250	16	1000	71,0	10052004	923.00	10039267	1'293.10
250	10	1200	98,8	10052250	2'197.10		
250	16	1200	98,8	10038030	2'461.60		
300	10	100	32,7	10040628	390.10	10039268	546.00
300	16	100	32,7	10042290	454.00	10039269	635.50
300	10	200	39,4	10040632	388.30	10039270	543.60
300	16	200	39,4	10042250	450.00	10039271	630.10
300	10	300	46,1	10040636	416.30	10039272	583.50
300	16	300	46,1	10042159	458.80	10039273	643.20
300	10	400	52,8	10040640	616.10	10039274	808.40
300	16	400	52,8	10042166	677.70	10039275	889.30
300	10	500	59,5	10048237	590.50	10039276	774.40
300	16	500	59,5	10051558	683.60	10039277	895.50
300	10	1000	90,5	10048987	1'037.90	10039278	1'433.80
300	16	1000	92,7	10051417	1'625.70	10039279	2'277.30
400	10	500	90,7	10048245	1'270.60	10039280	1'665.10
400	16	500	92,5	10043092	1'513.20	10039281	2'099.60
400	10	1000	148,5	10048988	3'034.70	10039282	4'249.40
400	16	1000	149,5	10051612	3'338.40	10039283	4'674.20
400	10	2000	293,0	10045546	5'320.50		
400	16	2000	293,0	10045547	5'825.60		
500	10	1000	258,0	10050830	3'834.90	10039284	5'370.10
500	16	1000	265,0	10045993	4'270.00	10039285	5'979.20
500	10	2000	524,0	10052254	6'989.10		
500	16	2000	524,0	10040144	7'657.60		

All prices exclude flange joint parts.

# FITTINGS

## FLANGE

### VONROLL / DUKTUS FF fitting

Flanged pipes

Version: Flange joint  
 Standards: EN 545 | EN 1092-2 | Company standard | EN 14 901 | GSK  
 Material: Ductile cast iron | Epoxy resin coating or full enamel



#### EPOXY

#### FULLY ENAMELLED

DN	PN bar	Installation length mm	Weight/unit kg	Part no.	Price/unit €	Part no.	Price/unit €
600	10	500	233,0	10052278	3'166.40	10039286	4'148.80
600	16	500	280,0	10043980	3'671.20	10039287	4'810.60
600	10	600	247,0	10052280	4'107.10	10039288	5'382.10
600	16	600	247,0	10037496	4'723.30	10039289	6'188.90
600	10	700	255,0	10052279	4'039.50	10039290	5'656.80
600	16	700	255,0	10037514	4'873.70	10039291	6'823.50
600	10	800	261,0	10052277	4'460.80	10039292	6'245.20
600	16	800	261,0	10037520	4'953.90	10039293	6'936.20
600	10	1000	291,0	10051651	4'307.30	10039294	6'030.20
600	16	1000	312,0	10043979	5'188.10	10039295	6'798.00
600	10	1100	310,0	10052270	4'998.10		
600	16	1100	310,0	10038031	7'705.40		
600	10	1200	330,0	10052281	5'827.30		
600	16	1200	330,0	10038032	8'689.70		
600	10	1300	350,0	10052276	6'015.10		
600	16	1300	350,0	10038033	8'995.10		
600	10	1400	370,0	10052275	6'202.70		
600	16	1400	380,0	10040301	7'096.50		
600	10	1500	397,0	10052274	6'410.70		
600	16	1500	407,0	10038034	9'633.00		
600	10	1600	422,0	10052273	6'958.20		
600	16	1600	422,0	10038035	10'356.40		
600	10	1700	448,0	10052271	7'108.30		
600	16	1700	448,0	60005821	13'009.10		
600	10	1800	465,0	60003108	9'344.80		
600	16	1800	465,0	60005822	13'346.80		
600	10	1900	475,0	60003109	9'529.00		
600	16	1900	475,0	60005823	13'617.90		
600	10	2000	500,0	10051973	7'541.70		
600	16	2000	520,0	10040082	8'935.40		
800	10	500	280,0	10040352	5'857.20	10039296	7'674.70
800	16	500	328,0	10040303	6'717.50	10039297	8'800.60
800	10	1000	513,0	10050598	6'963.60	10039298	9'123.00
800	16	1000	550,0	10043679	7'908.60	10039299	11'072.90
800	10	2000	782,0	10052291	10'770.90		
800	16	2000	782,0	10037074	12'384.60		
1000	10	500	440,0	10052305	9'610.80	10039300	13'456.00
1000	16	500	451,0	10037521	11'052.40	10039301	15'474.00
1000	10	600	540,0	10052302	10'889.30	10039302	15'627.60
1000	16	600	492,0	10037522	12'835.00	10039303	17'969.60
1000	10	800	750,0	10052303	12'838.60	10039304	17'974.80
1000	16	800	574,0	10037523	14'766.20	10039305	20'673.40
1000	10	1000	840,0	10052304	14'394.30	10039306	20'153.20
1000	16	1000	923,0	10043651	16'150.00	10039307	23'176.10
1000	10	2000	1450,0	10040010	24'395.90		

All prices exclude flange joint parts.

# FITTINGS

## FLANGE

### VONROLL / DUKTUS PE F fitting

Transition flange on a polyethylene pipe

Version: Flange joint  
 Standards: Company standard | EN 1092-2 | EN 14 901 | GSK  
 Material: Ductile cast iron | Epoxy resin coating or enamel



DN	d	PN bar	Version	Weight/unit kg	EPOXY		ENAMEL	
					Part no.	Price/unit €	Part no.	Price/unit €
80	90	10/16	SDR 11	6,0	10046445	300.30	10044254	421.30
80	90	10/16	SDR 17	6,0	10049531	300.30	10044258	421.30
100	110	10/16	SDR 11	7,6	10049533	337.90	10044262	474.20
100	110	10/16	SDR 17	7,6	10049537	337.90	10044266	474.20
100	125	10/16	SDR 11	7,7	10040929	364.90	10044581	511.80
100	125	10/16	SDR 17	7,7	10041214	364.90	10041213	511.80
150	160	10/16	SDR 11	7,7	10046446	474.20	10044272	665.40
150	160	10/16	SDR 17	7,7	10049539	474.20	10044276	665.40
150	180	10/16	SDR 11	7,7	10044280	505.10	10044288	707.90
150	180	10/16	SDR 17	7,7	10044284	505.10	10044292	707.90
200	225	10	SDR 11	12,9	10044296	743.80	10044300	1'042.40
200	225	10	SDR 17	12,9	10049827	743.80	10044304	1'042.40

Note that all prices exclude flange joint parts. PN 10 also available from DN 200.

# FITTINGS

## SOCKETS

### VONROLL / DUKTUS MMK fitting

Double socket elbow | PFA 16 bar

Version: Screw-gland socket joint | 11¼° or 22½° elbow  
 Standards: EN 545 | Company standard | EN 14 901 | GSK  
 Material: Ductile cast iron | Epoxy resin coating or full enamel



#### EPOXY

DN	Deflection [°]	Weight/unit kg	Part no.	Price/unit €
200	11	19,2	10047236	576.90

#### FULLY ENAMELLED

Part no.	Price/unit €
10045613	702.80

All prices include TYTON gaskets.



DN	Deflection [°]	Weight/unit kg	Part no.	Price/unit €
200	22	21,9	10047238	585.50

Part no.	Price/unit €
10045614	740.40

All prices include TYTON gaskets.

## FITTINGS SOCKETS

### VONROLL / DUKTUS MMK fitting

Double socket elbow | PFA 16 bar

Version: Screw-gland socket joint | 30° or 45° elbow  
 Standards: EN 545 | Company standard | EN 14 901 | GSK  
 Material: Ductile cast iron | Epoxy resin coating or full enamel



#### EPOXY

DN	Deflection [°]	Weight/unit kg	Part no.	Price/unit €
200	30	23,9	10047240	594.10

#### FULLY ENAMELLED

Part no.	Price/unit €
10045615	720.30

All prices include TYTON gaskets.



DN	Deflection [°]	Weight/unit kg	Part no.	Price/unit €
200	45	24,5	10047242	643.90

Part no.	Price/unit €
10045616	797.70

All prices include TYTON gaskets.

# FITTINGS

## SOCKETS

### VONROLL / DUKTUS MMB fitting

All socket tee | PFA 16 bar

Version: Screw-gland socket joint | Branched screw-gland socket joint  
 Standards: EN 545 | Company standard | EN 14 901 | GSK  
 Material: Ductile cast iron | Epoxy resin coating or full enamel



#### EPOXY

DN1	DN2	Weight/unit kg	Part no.	Price/unit €
125	40	15,1	10052406	<b>607.40</b>
125	80	17,0	10052408	<b>628.30</b>
125	100	18,3	10052409	<b>675.90</b>
125	125	19,9	10052410	<b>699.30</b>
150	40	18,3	10052411	<b>600.10</b>
150	80	19,9	10052414	<b>692.70</b>
150	100	21,0	10044214	<b>709.50</b>
150	150	25,0	10052413	<b>754.20</b>
200	40	26,0	10052417	<b>679.10</b>
200	80	28,0	10052424	<b>787.20</b>
200	100	29,5	10052425	<b>816.80</b>
200	150	33,5	10051305	<b>898.00</b>
200	200	38,0	10052428	<b>933.20</b>

#### FULLY ENAMELLED

Part no.	Price/unit €
10039473	<b>804.70</b>
10039475	<b>821.50</b>
10039477	<b>835.30</b>
10039479	<b>868.70</b>
10039481	<b>842.40</b>
10039483	<b>854.10</b>
10039484	<b>900.00</b>
10039485	<b>930.30</b>
10039486	<b>953.60</b>
10039489	<b>1'019.10</b>
10039490	<b>1'183.60</b>
10039492	<b>1'125.20</b>
10039493	<b>1'153.40</b>

All prices include sets of screws and seals.

# FITTINGS

## SOCKETS

### VONROLL MMA fitting

Double socket tee with flanged branch | PFA 16 bar

Version: Screw-gland socket joint | Branch flange joint  
 Standards: EN 545 | EN 1092-2 | Company standard | EN 14 901 | GSK  
 Material: Ductile cast iron | Epoxy resin coating or full enamel



#### EPOXY

DN1	DN2	Weight/unit kg	Part no.	Price/unit €
125	40	18,3	10041211	<b>647.60</b>
125	80	19,2	10045268	<b>868.40</b>
125	100	19,6	10052367	<b>897.70</b>
125	125	22,5	10052368	<b>772.10</b>
150	40	20,2	10045294	<b>731.10</b>
150	50	23,2	10052371	<b>729.30</b>
150	80	23,8	10045309	<b>731.10</b>
150	100	23,4	10045279	<b>772.10</b>
150	150	27,4	10052372	<b>1'108.60</b>
200	40	25,5	10052375	<b>781.00</b>
200	50	25,6	10052378	<b>781.00</b>
200	80	30,5	10046968	<b>956.80</b>
200	100	31,5	10045317	<b>1'142.90</b>
200	150	36,1	10052380	<b>980.50</b>

#### FULLY ENAMELLED

Part no.	Price/unit €
10039416	<b>930.60</b>
10039417	<b>1'108.90</b>
10039419	<b>1'443.00</b>
10039421	<b>1'109.60</b>
10039423	<b>1'051.90</b>
10039425	<b>1'048.40</b>
10045690	<b>1'051.90</b>
10045691	<b>982.40</b>
10045692	<b>1'422.60</b>
10039427	<b>1'123.90</b>
10039429	<b>1'027.80</b>
10045693	<b>1'376.20</b>
10045695	<b>1'428.40</b>
10045696	<b>1'363.00</b>

All prices include a set of screws and a seal and exclude flange joint parts.

# FITTINGS

## SOCKETS

### VONROLL/DUKTUS MMR fitting

Double socket taper | PFA 16 bar

Version: Screw-gland socket joint  
 Standards: EN 545 | Company standard | EN 14 901 | GSK  
 Material: Ductile cast iron | Epoxy resin coating or full enamel



#### EPOXY

DN1	DN2	Weight/unit kg	Part no.	Price/unit €
125	80	9,3	10052467	385.00
125	100	10,0	10047025	402.00
200	100	18,3	10047075	542.40
200	125	18,7	10052469	559.30
200	150	27,5	10047033	567.50

#### FULLY ENAMELLED

Part no.	Price/unit €
10039528	466.90
10039530	501.30
10039532	784.20
10039534	722.50
10039536	705.00

All prices include a set of screws and a seal.

# FITTINGS

## SOCKETS

### VONROLL flanged socket

Flanged socket piece

Version: Screw-gland socket joint | Flange joint | Standard version with electrical bridging  
 Standards: EN 545 | Company standard | EN 1092-2 | EN 14 901  
 Material: Ductile cast iron | Epoxy resin coating



#### EPOXY

DN	PN bar	Weight/unit kg	Part no.	Price/unit €
80	10/16	8,2	10049915	178.00
100	10/16	9,5	10049062	194.60
125	10/16	12,5	10047509	239.70
150	10/16	15,0	10048291	296.30
200	10	21,5	10049272	375.80
200	16	21,5	10050592	408.30
250	10	29,0	10049237	540.20
250	16	30,0	10043520	594.20
300	10	36,0	10048624	704.70
300	16	38,5	10051353	754.40
400	10	57,1	10049773	1'297.40
400	16	59,5	10052220	1'427.20

#### FULLY ENAMELLED

Part no.	Price/unit €
10045574	221.90
10045578	240.60
10039172	296.50
10045579	364.60
10045580	456.10
10052843	518.80
10045722	689.50
10039176	758.50
10045724	853.20
10039183	959.80
10045725	1'564.30
10039191	1'714.50

All prices include a set of screws and a seal but exclude flange joint parts.

# FITTINGS

## SOCKETS

### VONROLL / DUKTUS U fitting

Double socket collar | PFA 16 bar

Version: Screw-gland socket joint  
 Standards: EN 545 | Company standard | EN 14 901 | GSK  
 Material: Ductile cast iron | Epoxy resin coating or full enamel



#### EPOXY

DN	Weight/unit kg	Part no.	Price/unit €
80	9,0	10049896	308.20
100	11,0	10050167	408.00
125	13,5	10048295	502.20
150	17,5	10049229	507.90
200	24,0	10048424	579.20
250	30,0	10049005	871.30
300	40,5	10049239	999.40
400	62,5	10050808	1'634.60

#### FULLY ENAMELLED

Part no.	Price/unit €
10045628	389.20
10045629	514.40
10039735	638.90
10045630	652.00
10045631	721.30
10045750	1'110.60
10045751	1'283.00
10045752	2'148.10

All prices include sets of screws and seals.

# FITTINGS

## SOCKETS

### VONROLL threaded ring for screwed socket fittings (union)

Standards: EN 545 | EN 598 | Company standard

Material: Ductile cast iron | Epoxy resin coating



DN	Part no.	Price/unit €
40	10040053	37.00
80	10049897	64.80
100	10049653	74.30
125	10049906	98.60
150	10049669	112.10
200	10049671	126.40
250	10049770	163.90
300	10049799	193.80
400	10049835	289.60

# FITTINGS

## SOCKETS

### VONROLL U fitting

Double socket collar | PFA 16 bar

Version: BRS / longitudinally locked | without shear protection  
 TYTON not longitudinally locked | includes TYTON EPDM seal

Standards: EN 545 | Company standard | EN 14 901 | GSK

Material: Ductile cast iron | Epoxy resin coating or full enamel



EPOXY				FULLY ENAMELLED	
DN	Weight/unit kg	Part no.	Price/unit €	Part no.	Price/unit €
500	117,0	10050125	4'229.90	10045960	4'834.80
600	142,0	10050981	4'834.20	10045961	5'892.60

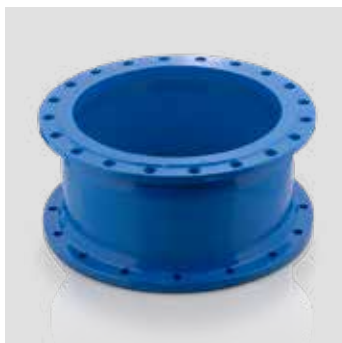
# FITTINGS

## SOCKETS

### VONROLL / DUKTUS flanged socket

Flanged socket piece

Version: Bolted-gland socket joint | Flange joint  
 Standards: EN 545 | EN 1092-2 | Company standard | EN 14 901 | GSK  
 Material: Ductile cast iron | Epoxy resin coating or full enamel



#### EPOXY

DN	PN bar	Weight/unit kg	Part no.	Price/unit €
500	10	79,0	10051637	<b>3'049.70</b>
500	16	88,0	10052221	<b>3'507.10</b>
600	10	108,0	10051635	<b>3'829.80</b>
600	16	132,0	10045414	<b>4'404.30</b>

#### FULLY ENAMELLED

Part no.	Price/unit €
10045727	<b>3'821.30</b>
10039194	<b>4'171.10</b>
10045729	<b>4'772.90</b>
10039196	<b>5'207.10</b>

All prices include a set of gland nuts and a seal and exclude flange joint parts.

# FITTINGS

## SOCKETS

### VONROLL / DUKTUS sealing ring and gland nut ring for fittings with a gland nut socket

Standards: EN 545 | EN 598 | Company standard

Material: EPDM for drinking water | NBR for wastewater | Steel gland nut ring/epoxy resin

#### Sealing ring



EPDM			NBR	
DN	Part no.	Price/unit €	Part no.	Price/unit €
500	31003131	206.80	32001458	224.90
600	31003133	283.10	31003738	309.80

#### Gland nut ring



STEEL/EPOXY		
DN	Part no.	Price/unit €
500	10050126	443.10
600	10044598	550.70

# FITTINGS

## SOCKETS

### VONROLL / DUKTUS hammer head bolts including nuts

Version: Gland nut socket  
 Standards: DIN 28 602  
 Material: Galvanised steel



DN	Dimensions	Quantity Set	Part no.	Price/unit €
500	M 20 x 100	16	31005343	127.40
600	M 20 x 100	16	31005343	127.40

# FITTINGS

## KS

### VONROLL / DUKTUS E KS fitting

Flange socket piece for PVC pressure pipes

Version: Flange joint  
 Standards: Company standard | EN 1092-2 | EN 14 901 | GSK  
 Material: Ductile cast iron | Epoxy resin coating or enamel



DN	d	PN bar	Weight/unit kg	EPOXY		ENAMEL	
				Part no.	Price/unit €	Part no.	Price/unit €
80	90	10/16	4,6	10036683	76.80	10044073	107.40
10	110	10/16	5,7	10048265	87.10	10044074	122.80
125	140	10/16	7,4	10051010	102.40	10044075	143.30
150	160	10/16	9,6	10048266	122.80	10044076	172.30
200	225	10	15,5	10050282	199.50	10044077	279.70
200	225	16	16,1	10048563	225.10	10044593	315.60
250	280	10	24,5	10050437	319.00	10044078	447.00
250	280	16	25,3	10045874	356.40	10044594	499.80
300	315	10	31,5	10049706	383.90	10044079	537.40
300	315	16	37,0	10046230	414.70	10044595	581.60

Note that all prices exclude flange joint parts. PN 10 also available from DN 200.

# FITTINGS

## KS

### VONROLL / DUKTUS F KS fitting

Flange head end piece for PVC pressure pipes

Version: Flange joint  
 Standards: Company standard | EN 1092-2 | EN 14 901 | GSK  
 Material: Ductile cast iron | Epoxy resin coating or enamel



DN	d	PN bar	Weight/unit kg	EPOXY		ENAMEL	
				Part no.	Price/unit €	Part no.	Price/unit €
80	90	10/16	5,0	10036684	93.90	10036756	131.30
100	110	10/16	6,6	10036685	107.40	10036757	151.80
150	160	10/16	10,5	10036686	163.80	10036758	230.40
200	225	10	26,4	10036687	290.10	10036759	405.90
200	225	16	26,4	10036717	346.40	10037946	486.10
300	315	10	31,0	10050438	460.50	10036760	644.80
300	315	16	31,0	10050948	542.40	10038012	761.00

Note that all prices exclude flange joint parts.

# FITTINGS

## KS

### VONROLL / DUKTUS MMA KS fitting

Double socket piece with a flanged branch for PVC pressure pipes

Version: Flange joint  
 Standards: Company standard | EN 1092-2 | EN 14 901 | GSK  
 Material: Ductile cast iron | Epoxy resin coating or enamel

#### EPOXY

#### ENAMEL



DN1	DN2	PN bar	Weight/unit kg	Part no.	Price/unit €	Part no.	Price/unit €
80	80	10/16	9,1	10050875	<b>162.00</b>	10044597	<b>226.90</b>
100	80	10/16	15,6	10036688	<b>167.30</b>	10036761	<b>235.40</b>
100	100	10/16	13,5	10050967	<b>198.00</b>	10036762	<b>278.10</b>
150	80	16	14,5	10036689	<b>235.40</b>	10036763	<b>330.90</b>
150	100	16	16,0	10050260	<b>252.50</b>	10036764	<b>354.90</b>
150	150	16	25,1	10036695	<b>284.70</b>	10036765	<b>399.20</b>

Note that all prices exclude flange joint parts.

# FITTINGS

## WASTE WATER

### VONROLL / DUKTUS SI 45 tapping saddle 45°

Version: Ductile wastewater pipes which are suitable for the socket | incl. seal and bolts  
 Standards: EN 598 | Company standard | EN 14 901  
 Material: Ductile cast iron | Epoxy resin coating | NBR seal | Corrosion-resistant steel bolts



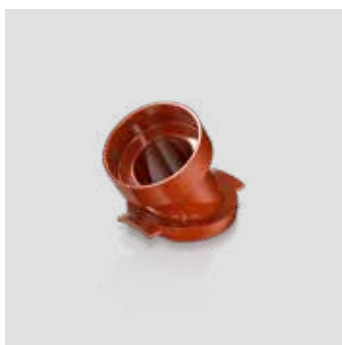
DN1	DN2	Weight/unit kg	Part no.	Price/unit €
250-300	150	10,8	10008231	448.50

# FITTINGS

## WASTE WATER

### VONROLL / DUKTUS SM 45 tapping saddle 45°

Version: Push-in socket L spigots which are suitable for stoneware pipes | incl. pot seal and bolts  
 Standards: EN 598 | Company standard | EN 14 901  
 Material: Ductile cast iron | Epoxy resin coating | NBR seal | Corrosion-resistant steel bolts



DN1	DN2	Weight/unit kg	Part no.	Price/unit €
250-300	150	10,3	10008232	468.60
350-400	150	9,3	10008233	468.60

# FITTINGS

## WASTE WATER

### VONROLL / DUKTUS SI 90 tapping saddle 90°

Version: Smooth, stoneware pipes which are suitable for the socket | incl. seal and bolts  
 Standards: EN 598 | Company standard | EN 14 901  
 Material: Ductile cast iron | Epoxy resin coating | NBR seal | Corrosion-resistant steel bolts



DN1	DN2	Weight/unit kg	Part no.	Price/unit €
250-300	150	8,5	10008149	257.80
400-600	150	8,3	10008150	336.30
700-1'200	150	7,6	10008151	336.30
300	200	12,9	10008152	369.80
350	200	12,0	10008230	369.80
400	200	12,0	10008153	369.80
500-600	200	12,1	10008154	369.80
700-800	200	10,5	10008155	369.80
900-1'200	200	10,0	10008156	369.80

# FITTINGS

## WASTE WATER

### VONROLL / DUKTUS SM 90 tapping saddle 90°

Version: Push-in socket L spigots which are suitable for stoneware pipes | incl. pot seal and bolts  
 Standards: EN 598 | Company standard | EN 14 901  
 Material: Ductile cast iron | Epoxy resin coating | NBR seal | Corrosion-resistant steel bolts



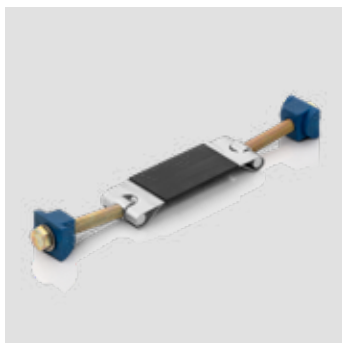
DN1	DN2	Weight/unit kg	Part no.	Price/unit €
250-300	150	9,4	10008157	359.90
350	150	8,5	10008234	359.90
400-600	150	8,5	10008158	363.20
700-1'200	150	8,6	10008159	363.20

# FITTINGS

## VONROLL / DUKTUS for tapping saddles

### Flexible stainless steel clamp GR 220

Version: Accessories  
 Standards: EN 598 | Company standard | EN 14 901  
 Material: Passivated stainless steel | Polyamide joint pieces | EPDM seal | NBR rubber insert Chromated nuts



DN	Pipe dimensions (external diameter) mm			Clamping range mm	Weight/unit kg	Part no.	Price/unit €
	Casting	ac pipe	Steel				
80	98	98-104	88,9	85-105	0,8	10053273	upon request
100	118	118-130	114,3/108	105-130	0,8	10053514	upon request
125	144	145-159	139,7/133	130-155	1,3	10053274	upon request
150	170	172-182	168,3/159	155-185	1,3	10053513	upon request

# FITTINGS

## WASTE WATER

### VONROLL / DUKTUS MMI 45 double socket branch 45°

Version: TYTON socket joint | Smooth, stoneware pipes which are suitable for the socket  
 Standards: EN 598 | Company standard | EN 14 901  
 Material: Ductile cast iron | Epoxy resin coating



DN1	DN2	Weight/unit kg	Part no.	Price/unit €
200	150	34,5	10008160	804.40

# FITTINGS

## WASTE WATER

### VONROLL / DUKTUS MMM 45 double socket branch 45°

Version: TYTON socket joint | Push-in socket L spigots which are suitable for stoneware pipes | incl. pot seal and bolts  
 Standards: EN 598 | Company standard | EN 14 901  
 Material: Ductile cast iron | Epoxy resin coating



DN1	DN2	Weight/unit kg	Part no.	Price/unit €
200	150	38,0	10008235	804.40

# FITTINGS

## WASTE WATER

### VONROLL / DUKTUS ICI 67 smooth end branch 67°

Version: Spigots suitable for ductile cast iron pipes  
 Standards: EN 598 | Company standard | EN 14 901  
 Material: Ductile cast iron | Epoxy resin coating



DN1	DN2	Weight/unit kg	Part no.	Price/unit €
200	150	30,0	10008161	838.40

# FITTINGS

## WASTE WATER

### VONROLL / DUKTUS SCH shaft connection piece

Version: TYTON socket joint | Incl. sealing ring  
 Standards: EN 598 | DIN 28 603 | Company standard | EN 14 901  
 Material: Ductile cast iron | Epoxy resin coating | TYTON seal NBR



DN	Weight/unit kg	Part no.	Price/unit €
150	7,1	10008120	176.30
200	8,0	10008162	189.60
250	10,0	10008163	288.40
300	12,5	10008164	337.10
350	15,0	10008138	643.90
400	16,5	10008165	624.00
500	22,0	10008166	1'135.30
600	26,5	10008167	1'466.50
700	43,0	10008168	2'407.50
800	49,0	10008169	3'352.20
900	61,0	10008170	5'444.30
1000	71,5	10008171	7'283.60

# FITTINGS

## WASTE WATER

### VONROLL / DUKTUS RRF pipe cleaning piece

Version: Flange joint | PN 10  
 Standards: EN 598 | EN 1092-2 | Company standard | EN 14 901  
 Material: Ductile cast iron | Epoxy resin coating



DN	Weight/unit kg	Part no.	Price/unit €
80	40,0	10008237	3'687.10
100	42,0	10007701	4'072.90
125	70,0	10007651	5'072.80
150	68,0	10007700	5'352.50
200	90,0	10008145	6'631.10
250	113,0	10007699	8'475.60
300	170,0	10008181	9'996.90
350	240,0	10007698	12'162.90
400	268,0	10007697	16'213.10
500	414,0	10008182	19'165.40

# FITTINGS

## WASTE WATER

### VONROLL / DUKTUS MM fitting

#### TYTON coupling

Version: TYTON socket joint | incl. sealing ring  
 Standards: EN 598 | Company standard | EN 14 901  
 Material: Ductile cast iron | Epoxy resin coating | TYTON seal NBR



DN	Weight/unit kg	Part no.	Price/unit €
150	8,0	10008172	293.50
200	11,5	10008173	424.80
250	14,5	10008174	480.10
300	20,0	10008175	749.80
350	26,0	10008144	1'050.60
400	32,0	10008176	1'326.80
500	45,0	10008177	1'805.60
600	56,0	10008178	2'360.60
700	97,0	10008179	4'053.70
800	128,0	10008180	6'753.00

# FITTINGS

## WASTE WATER

### VONROLL / DUKTUS pipe sealing lid with a bleed valve

Version: Cover with clamping screws, seal and screwed-in vent valve  
 Standards: Company standard | EN 14 901  
 Material: Ductile cast iron | Epoxy resin coating



DN	Weight/unit kg	Part no.	Price/unit €
150	1,0	10008236	179.00

# CONNECTION TECHNOLOGY

## VONROLL HYDROTIGHT THRUST RESTRAINT

external, non-conductive

Version: HYDROTIGHT restrained push-fit joint  
 Standards: EN 545 | Company standard | EN 14 901 | GSK  
 Material: Ductile cast iron | Epoxy resin coating



DN	Pipe grade	PFA bar	DF mm	Number of bolts	Weight/unit kg	NPK 412	Part no.	Price / unit €
80	C100	40	235	3	4,7	238.471	10008512	<b>200.70</b>
100	C100	40	256	3	5,1	238.472	10008511	<b>188.50</b>
125	C64	40	287	3	5,7	238.473	10008510	<b>181.20</b>
150	C64	40	310	4	6,9	238.474	10068138	<b>199.10</b>
200	C64	16	325	3	8,9	238.475	10008508	<b>295.10</b>
200	C64	40	325	6	10,1	238.475	10068126	upon request
250	C50	16	421	4	13,9	238.476	10008507	<b>407.00</b>
250	C50	40	421	8	15,5	238.476	10008504	upon request
300	C50	16	479	5	19,6	238.477	10008506	<b>427.90</b>
300	C50	40	479	10	21,6	238.477	10008503	upon request

Higher pressures available on request. External thrust ring for socket-and-spigot joints with an angled support collar. Thrust ring epoxy-coated. Other nominal diameters available on request.

# CONNECTION TECHNOLOGY

## VONROLL HYDROTIGHT THRUST RESTRAINT

(internal) for double chambers, standard, non-conductive

Version: HYDROTIGHT restrained push-fit joint  
 Standards: EN 545 | Company standard  
 Material: EPDM | stainless steel gripping segments



DN	Pipe grade	PFA bar	Weight / unit kg	NPK 412	Part no.	Price / unit €
80	C100	25	0,15	238.211	10008558	71.40
100	C100	25	0,25	238.212	10008559	74.10
125	C64	25	0,25	238.213	10008568	98.60
150	C64	25	0,3	238.214	10008569	99.90
200	C64	25	0,4	238.215	10007407	131.50
250	C50	16	0,5	238.216	10008570	137.70
300	C50	16	0,6	238.217	10008571	157.30

## VONROLL HYDROTIGHT THRUST RESTRAINT

(internal) for double-walled pipes | for higher pressures (up to DN 300) and pipes from DN 350 to DN 400

Version: HYDROTIGHT push-fit joint  
 Standards: EN 545 | Company standard  
 Material: EPDM | stainless steel gripping segments



DN	Pipe grade	PFA bar	Weight / unit kg	NPK 412	Part no.	Price / unit €
80	C100	40	0,2	238.211	10009536	68.10
100	C100	40	0,3	238.212	10008553	74.40
125	C64	40	0,3	238.213	10008554	85.90
150	C64	40	0,4	238.214	10008555	109.00
200	C64	40	0,6	238.215	10008556	162.40
250	C50	25	0,7	238.216	10007404	191.80
300	C50	25	0,8	238.217	10008557	229.50

Other DN's available on request.

# CONNECTION TECHNOLOGY

## BLS Type R

Version: BLS locking ring for installation with weld bead  
 Standards: EN 545 | Company standard | EN 14 901  
 Material: Ductile cast iron | Epoxy resin coating

### Accessories BLS



DN	PN bar	Weight / unit kg	per set	Part no.	Price/set €
80	64	0.4	1	32000043	51.90
100	64	0.4	1	32000042	53.40
125	60	0.6	1	32000041	69.20
150	50	0.8	1	32000040	68.00
200	40	1.1	1	32000039	78.00
250	35	1.5	1	32000038	78.70
300	30	2.7	1	32000046	64.50
400	30	2.7	1	32000045	111.40
500	30	5.5	1	32000044	183.30
600	32	8.1	1	32006140	531.80
700	25	9.5	1	32006126	735.80
800	16	11.5	1	32006141	760.50
900	16	13.4	1	32006349	893.70
1000	10	18.4	1	32006128	1'007.70

	Part no.	Price / unit €
<b>BLS clamping band DN 600–1000</b>	32000091	9.60

## BLS Type R-KS

Version: BLS plastic locking ring for installation with a weld bead  
 Standards: EN 545 | Company standard | EN 14 901  
 Material: Plastic

### Accessories BLS



DN	PN bar	Weight / unit kg	per set	Part no.	Price / set €
80	16	0.13	1	32000247	32.70
100	16	0.18	1	32000037	33.90
125	16	0.21	1	32000036	47.30
150	16	0.32	1	32000035	48.30
200	16	0.44	1	32000034	56.90
250	16	0.70	1	32000033	61.20
300	16	0.90	1	32000032	64.50
400	16	1.30	1	32000031	111.40
500	16	1.70	1	32000030	183.30

# CONNECTION TECHNOLOGY

## DUKTUS clamping ring BLS

Version: BLS-joint with a clamping ring (frictional locking), compatible with all BLS sockets DN 80 to DN 500  
 Standards: Company standard  
 Material: Ductile cast iron | Galvanised finishing layer



DN	PFA bar	Weight/unit kg	Part no.	Price/unit €
80	45	0,9	32000058	139.40
100	45	1,0	32000057	153.30
125	45	1,4	32000056	176.10
150	45	1,7	32000026	187.50
200	45	2,2	32000055	285.80
250	45	2,7	32000054	306.40
300	30	3,6	32000053	356.50
400	30	6,0	32000250	619.90
500	30	7,2	32000052	837.50

When used on PUR-coated pipes PFA 25.

# CONNECTION TECHNOLOGY

## Combined protective sleeves for pipes with external CMC or PUR

Version: Combined protective sleeves for BLS / HYDROTIGHT / TYTON pipes

Material: EPDM



DN	Weight / m kg	Part no.	Price / m €
80	0,2	32000105	17.00
100	0,2	32000104	21.50
125	0,3	32000103	23.00
150	0,3	32000102	25.50
200	0,4	32000101	31.10
250	0,5	32000100	39.40
300	0,7	32000099	44.20
400	0,8	32000098	80.40
500	0,9	32000097	115.60
600	1,9	32000096	119.90
700	2,5	32000018	264.00

## Shrink-on collars (thermally) closed for pipes with external CMC / PUR

Version: Shrink-on collars for shrinking BLS / HYDROTIGHT / TYTON pipes

Material: Polyethylene



DN	Connection	Weight / m kg	Part no.	Price / m €
80	TYT/BLS	0,30	32000213	56.40
100	TYT/BLS	0,35	32000212	56.40
125	TYT	0,45	32000211	58.80
150	TYT/BLS	0,55	32000210	58.80
200	TYT/BLS	0,65	32000209	81.60
250	TYT/BLS	0,75	32000208	87.40
300	TYT/BLS	0,85	32000207	96.80
350	TYT	1,20	32000206	101.30
400	TYT/BLS	1,35	32000205	157.00
500	TYT/BLS	1,55	32000204	182.10

# CONNECTION TECHNOLOGY

## DRINKING WATER

### VONROLL / DUKTUS TYTON-SIT-PLUS sealing ring drinking water (BRS) and identification ring

Standards: EN 681-1 | DIN 28 603

Material: EPDM

#### Sealing ring



DN	Pressure class BRS □ PFA bar	Part no.	Price/unit €
80	32	32002762	26.40
100	32	32002763	28.40
125	25	32002766	34.80
150	25	32002767	36.80
200	25	32002768	64.50
250	25	32002769	80.60
300	25	32002770	112.10
350	25	32002771	184.80
400	16	32002772	228.10
500	16	32002773	322.30
600	10	32002774	431.90

#### Identification ring



DN	White NBR Part no.	Price/unit €
80	32002202	1.90
100	32002203	2.20
125	32002204	2.40
150	32002205	2.70
200	32002206	3.40
250	32002207	3.60
300	32002208	4.20
350	32002209	4.50
400	32002210	5.00
500	32002211	6.00
600	32002212	7.10

Please note that the TYTON-SIT-PLUS seals can only be delivered in conjunction with the associated socket fittings.

# CONNECTION TECHNOLOGY

## WASTE WATER

### VONROLL / DUKTUS TYTON-SIT-PLUS sealing ring wastewater (BRS) and identification ring

Standards: EN 681-1 | DIN 28 603

Material: NBR

#### Sealing ring



DN	Pressure class BRS □ PFA bar	Part no.	Price/unit €
80	32	32002387	30.30
100	32	32002388	32.30
125	25	32002389	39.30
150	25	32002390	41.30
200	25	32002391	72.20
250	25	32002392	90.20
300	25	32002393	135.40
350	25	32002394	212.70
400	16	32002279	257.80
500	16	32002395	360.90
600	10	32002396	484.10

#### Identification ring



DN	White NBR Part no.	Price/unit €
80	32002202	1.90
100	32002203	2.20
125	32002204	2.40
150	32002205	2.70
200	32002206	3.40
250	32002207	3.60
300	32002208	4.20
350	32002209	4.50
400	32002210	5.00
500	32002211	6.00
600	32002212	7.10

Please note that the TYTON-SIT-PLUS seals can only be delivered in conjunction with the associated socket fittings.

# CONNECTION TECHNOLOGY

## GAS

### VONROLL / DUKTUS TYTON sealing ring

Standards: EN 681-1 | DIN 28 603 | W270  
 Material: EPDM for drinking water | NBR for wastewater



EPDM			NBR	
DN	Part no.	Price/unit €	Part no.	Price/unit €
80	32002735	5.40	31004124	9.10
100	32002736	5.80	32001344	10.10
125	32002737	7.90	32001345	12.90
150	32002738	8.20	32001286	13.20
200	32002739	12.70	32001316	21.90
250	32002740	16.50	32001285	27.10
300	32002741	22.60	32001250	33.90
350	32002742	30.10	32002095	52.20
400	32002743	33.30	32001288	56.60
500	32002744	48.10	32001508	96.30
600	32002745	80.70	32001317	152.90
700	32002746	141.30	31006433	242.50
800	32002747	181.80	32002033	324.60
900	32000190	276.90	32000175	413.10
1000	32002761	359.30	32002094	465.80

# ACCESSORIES

## HYDROTIGHT installation tool

Version: for HYDROTIGHT connections | Complete set (end clamp, socket clamp, 2 open-ended spanners)



DN	Weight kg	Part no.	Price / unit €
80	18,7	10009117	2'219.70
100	19,0	10000365	2'273.10
125	19,2	10000364	2'326.60
150	19,5	10000363	2'380.00
200	20,5	10000362	2'433.50
250	21,0	10009116	2'486.90
300	22,5	10009115	2'540.40

## BLS BLS laying system

Version: Installation unit type 2 for pipes with cement mortar coating (FZM) DN 80 to DN 400 (blue marking)



### TYP 2 – FZM

DN	Components	Part no.	Price / unit €
100		21017188	1'370.80
125	2 clamps	21017189	1'435.80
150	2 levers	21017190	1'472.40
200		21017191	1'583.50

# ACCESSORIES

## Extension brackets (2 pieces)

Version: for mounting the VS 5000 slide valve



DN	Weight kg	Part no.	Price / unit €
80-200	7,8	10007362	auf Anfrage

## Cordless screwdriver | Complete set

Version: Torque: Level 1 – 65 Nm | Level 2 – 160 Nm | Weight including battery 1.0 kg | Length 167 mm | Drive 1/2" square | Standard equipment: 2 x 12 V/2.0 Ah Red Li-Ion battery | Charger | HD Box | Socket set M20



Weight kg	Part no.	Price / unit €
4,5	21000675	696.90

# ACCESSORIES

## Installation aids: groove scraper and gauge (feeler)

Version: for push-fit socket pipe systems



DN	Weight kg	Part no.	Price / unit €
80-1000	7,8	10000826	7.90

## Inspection gauge (feeler)

Version: for push-fit socket pipe systems



DN	Weight kg	Part no.	Price / unit €
80-700	0,1	21075257	6.10

# ACCESSORIES

## NEUTREX T lubricant

Specification: lubricant approved for use with drinking water



Weight kg	Part no.	Price / unit €
0,5	32000106	9.10

# ACCESSORIES

## Repair kit RESICOAT® RS

Dual-chamber cartridge

Type: ready-to-use | for polyurethane and epoxy resin coatings  
 Material: two-component repair material packaged in the correct 2:1 mixing ratio | Colour: blue



Weight g	Part no.	Price / unit €
100	10000821	44.00

## Repair kit RESICOAT® RS

Version: for HYDROTIGHT connections | End clamp



Weight g	Part no.	Price / unit €
180	10000823	259.90

# ACCESSORIES

## Repair kit RESICOAT® RS

Type: Mixing pipe



Weight g	Part no.	Price / unit €
10	10000820	7.30

# ACCESSORIES

## REPAIR KIT FOR FZM CEMENT MORTAR COATING

Application: for repairing the FZM coating

Contents: approx. 4 kg cement/sand mixture, approx. 5 m of gauze, 200 mm wide, approx. 1 litre additive mixture



Weight / unit kg	Part no.	Price / unit €
9,5	32000021	<b>63.40</b>

Any damaged sections of the FZM must only be repaired using the repair kit supplied by the pipe manufacturer. The contents are specifically designed for use with vonRoll/Duktus pipes.

No component must be replaced with any other material or used with cement types other than those specified on the repair kit.

! For instructions on use, see the CEMPUR installation guide!

# ACCESSORIES

## HYDROTIGHT/BRS removal tool | Impact head

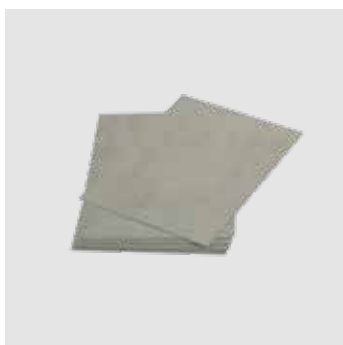
Design: for slip-resistant HYDROTIGHT/BRS push-fit sockets



DN	Weight kg	Part no.	Price / unit €
80-100	0,7	32000394	93.30
125-150	0,7	32000393	93.30
200-600	0,7	32000501	93.30

## HYDROTIGHT/BRS removal tool | Release plate

Design: for slip-resistant HYDROTIGHT/BRS push-fit sockets



DN	Weight kg	Part. no.	Number per connection	Price / unit €
80	0,1	32000392	4	23.00
100	0,1	32000392	4	23.00
125	0,1	32000392	5	23.00
150	0,1	32000392	6	23.00
200	0,1	32000392	8	23.00
250	0,1	32000392	10	23.00
300	0,1	32000392	12	23.00
350	0,1	32000392	14	23.00
400	0,1	32000392	16	23.00
500	0,1	32000392	19	23.00
600	0,1	32000392	23	23.00





**ZEROWATERLOSS**  
vonroll-hydro.world